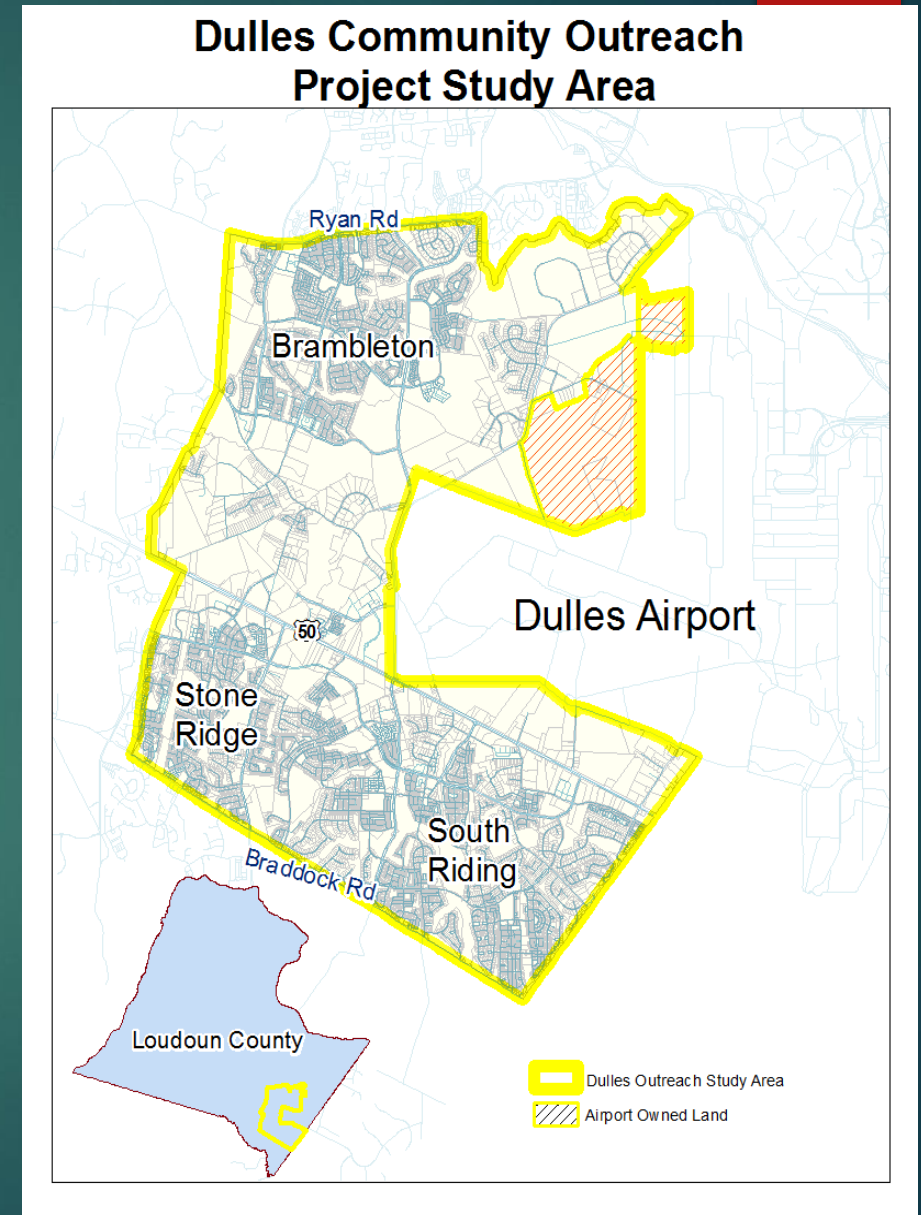


Dulles Community Outreach Project

BUSINESS LEADERSHIP WORK SESSION

JANUARY 28, 2015



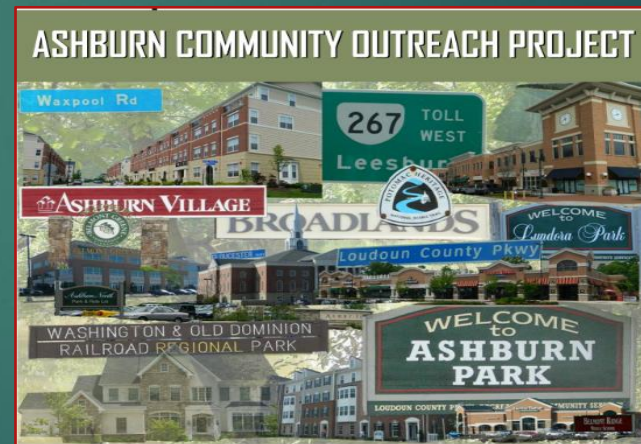
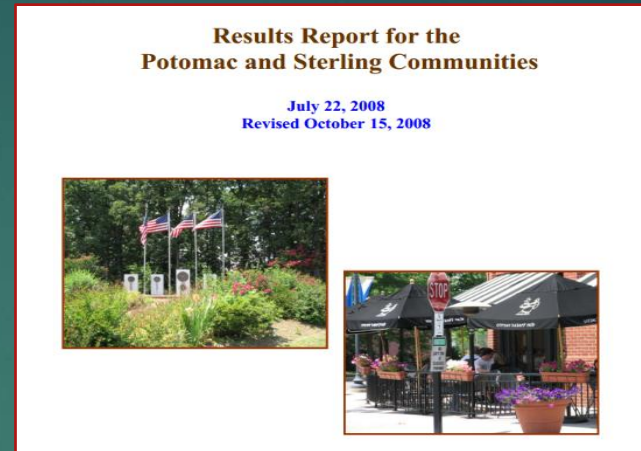
Purpose

- ❑ Conduct a dialogue with stakeholders of the Dulles Community
- ❑ Identify neighborhood and community-wide priorities
- ❑ Develop recommended strategies to aid in future planning and programmatic activities.

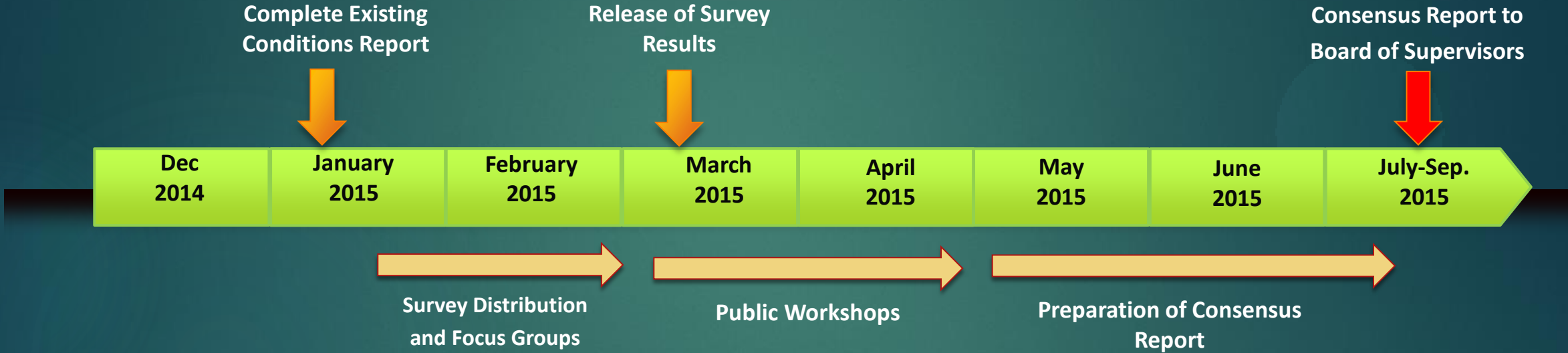
Previous Efforts

Suburban Policy Areas

- ❑ Potomac/Sterling 2008
- ❑ Ashburn 2011
- ❑ Dulles 2014-15



Dulles Community Outreach Project: Timeline



Methods of gathering information will include resident and business surveys, public workshops, online engagement, and targeted focus groups

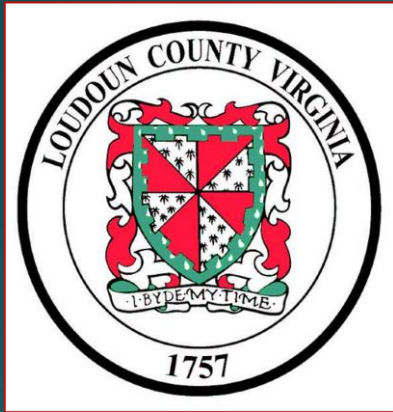
Methods of communicating will include the project's web page, social media outlets, interactive events, flyers, advertisements, and public access television.

Methods (January –April 2015)



- ❑ Surveys (Residents and Businesses)
- ❑ Workshops (Internal and at Community Meetings)
 - ❑ Web-based forums (Mind Mixer)
 - ❑ Interactive mapping (ArcGIS Online)
- ❑ Focus groups (Businesses, Youth, Seniors)

Electronic Outreach



loudoun.gov/dullescommunityoutreach



<http://loudouncountyva.mindmixer.com/>



www.loudoun.gov/dullesmap

Surveys

- Resident and Business ([Links on our project website](#))

- Survey Window

- Open until the end of February

- Survey Results

- To be released in March

Community work sessions
Focus groups

ArcGIS Crowdsourced Mapping (Geoform) ^{NEW}
You can use the internet to interact with the Dulles Assets and Needs map through your computer or smartphone. See instructions below and then check out the [ArcGIS Crowdsourced Mapping \(Geoform\)](#).

- [Dulles Geoform Map Instructions](#)
- [iPhone App Instructions](#)
- [Android App Instructions](#)

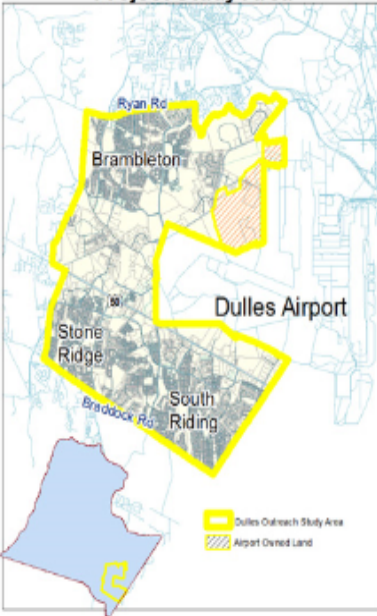
Take Our Survey ^{NEW}
Tell us what you think! The survey will provide valuable input for future community meetings.

- [Dulles Community Outreach Survey for Residents](#)
- [Dulles Community Outreach Survey for Businesses](#)

Are You in Dulles?
The Dulles Community includes the following areas: Amber Springs Condominium, Amberlea at South Riding, Arcola Center, Arcola Grove, Avonlea, Belmont Trace, Blue Spring Farm, Braddock Corner, Brambleton Brand Property, Brambleton Community Association, Brambleton Corner, Briarfields Estates, Bridle Ridge, Cedar Hunt, Centre Park Stoneridge Condominium, East Gate, Eastgate Square, Elk Lick Estates, Estates at Elk Run, Evergreen Meadows, Frontier Springs, Kimmitt Property, Kirkpatrick Farms, Lakeside at South Riding, Little River Commons, Loudoun Valley Estates, Mercer Park Condominium, Poland Estates, Poland Road Property, Providence Glen, Providence Ridge, Reserve at South Riding, Ridings at Blue Spring, South Riding Proprietary Inc., South Village, Stone Ridge, Stratshire Crossing, Tall Cedar Estates, The Pines, The Woods at Brambleton, Trente Grove, VA Manor, Valley Vista, Westview Estates and Westwind Crossing.

the following participation methods excite you the most.

Dulles Community Outreach Project Study Area



Click on the image for a larger view of the study area.

Dulles Community Existing Conditions Report

- ▶ **General, Existing Information Dulles Community**
- ▶ **Resource for Public; Background for Community Surveying/Public Workshops**

Natural Resources	Archeological/Historic Resources
Demographics Characteristics	Existing Land Uses
Planned Land Use/Zoning	Existing Community Facilities
Schools	Fire and Rescue Data
Law Enforcement Data	Economic Development Data
Transportation Networks/Status New Roads/Transit Services	Infrastructure/Utilities/Powerlines

Community Boundary Map

North: Broad Run & Ryan Road

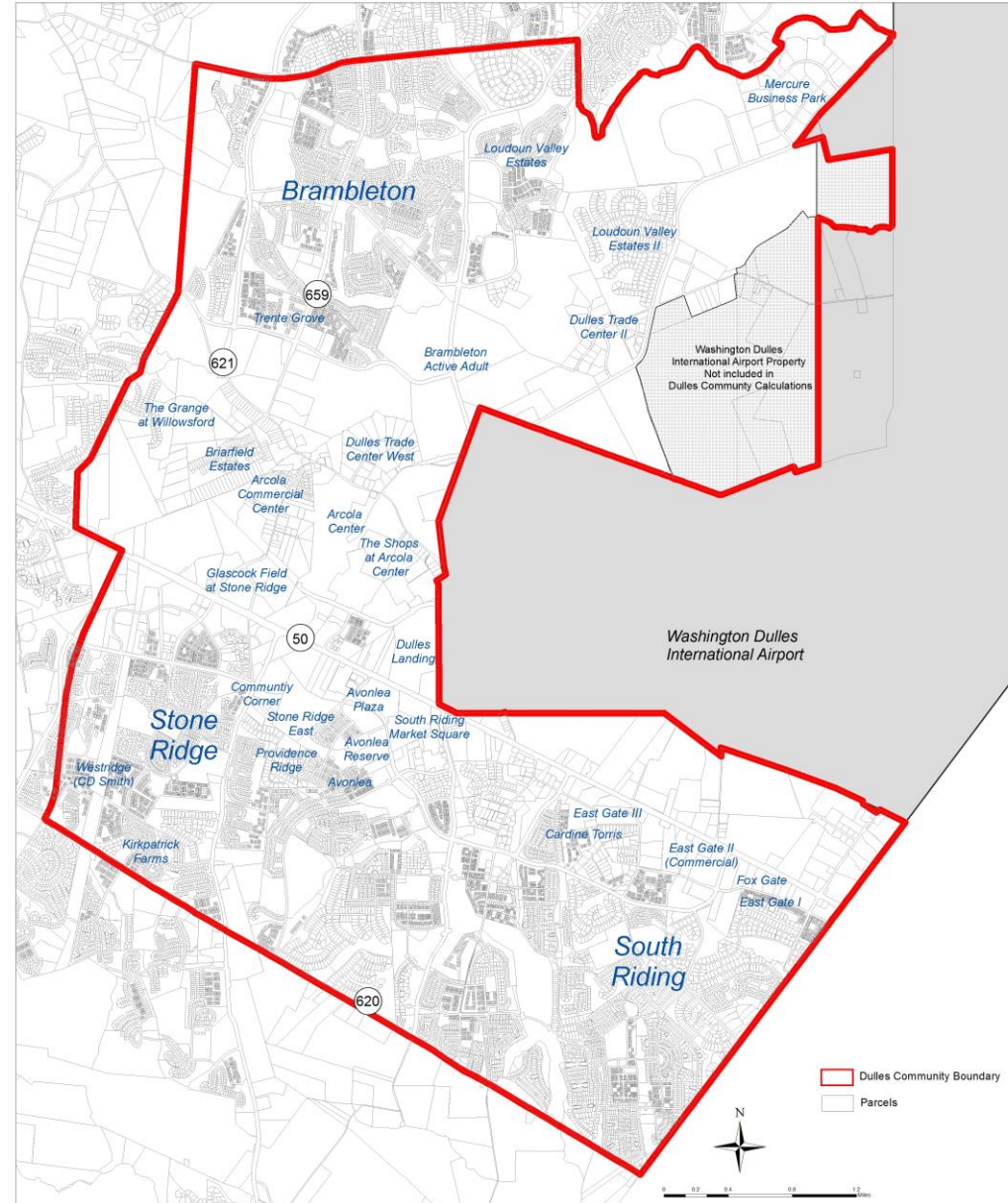
East: Dulles Airport & Fairfax County

South: Braddock Road

West: Relocated Route 659 & Powerlines

Dulles Community

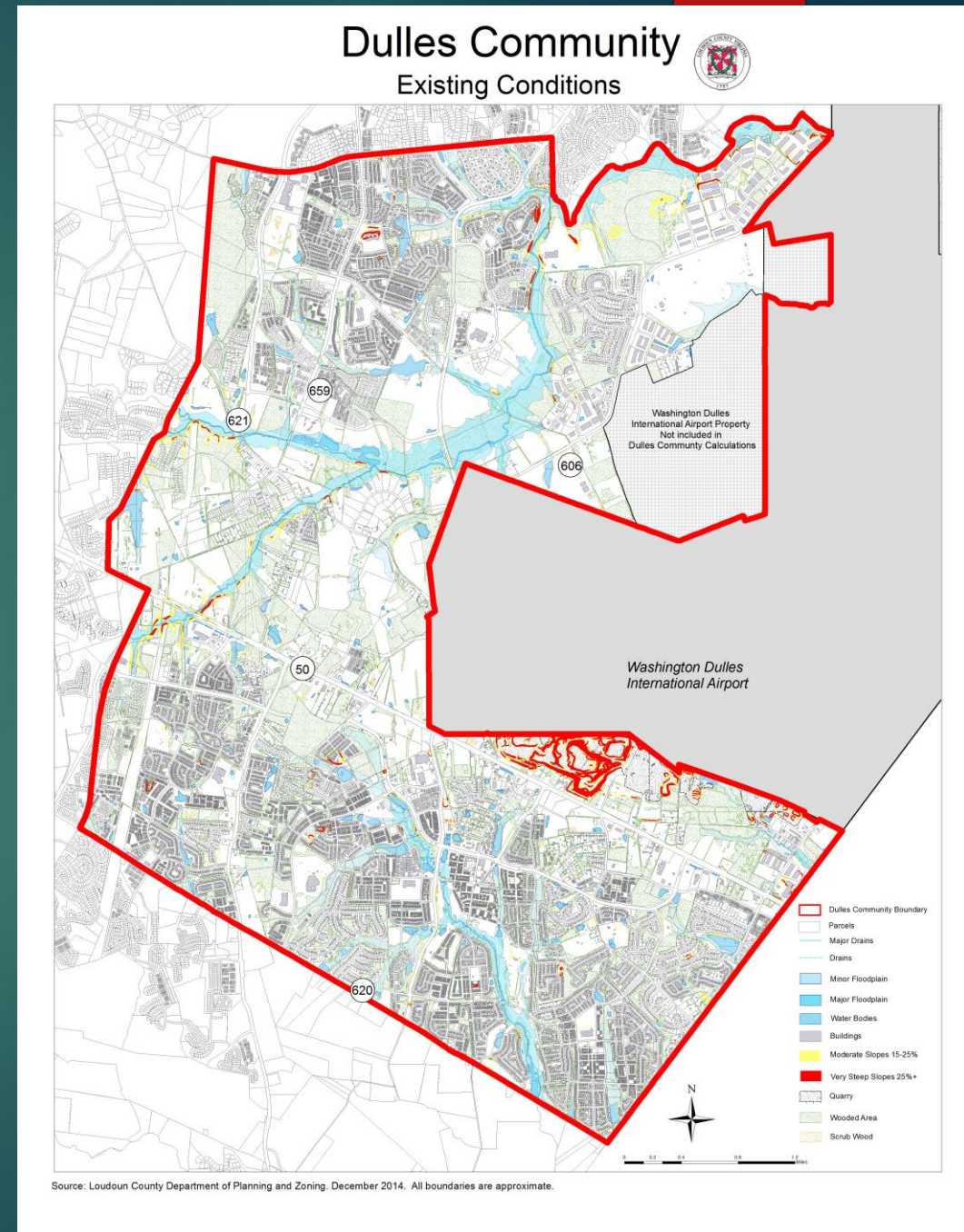
Vicinity Map



Source: Loudoun County Department of Planning and Zoning, December 2014. All boundaries are approximate.

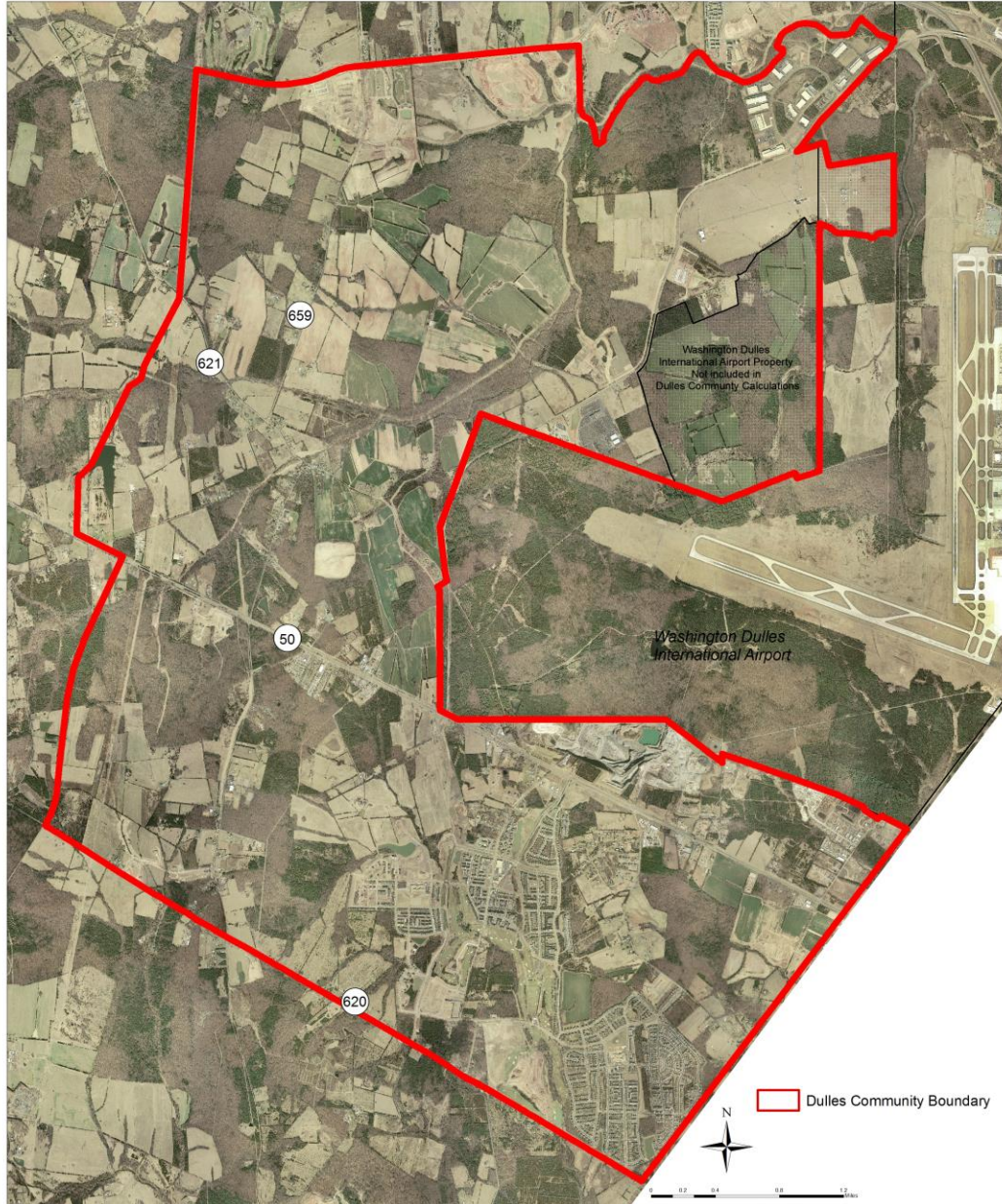
Physical Characteristics

- Dulles Community
 - 13,630 acres
 - 19,129 parcels
 - 17,658 Housing Units: 3.74 units per acre (avg. density)
 - Over 42 Homeowners Associations
- 3,200 acres of forest cover, 24% area
- 1,400 acres of floodplains & water resources, 10% area
- 303 acres of land quarried for diabase rock, 2% area
- Several archaeological sites and historic sites
- Community surrounds Washington Dulles Airport



Dulles Community

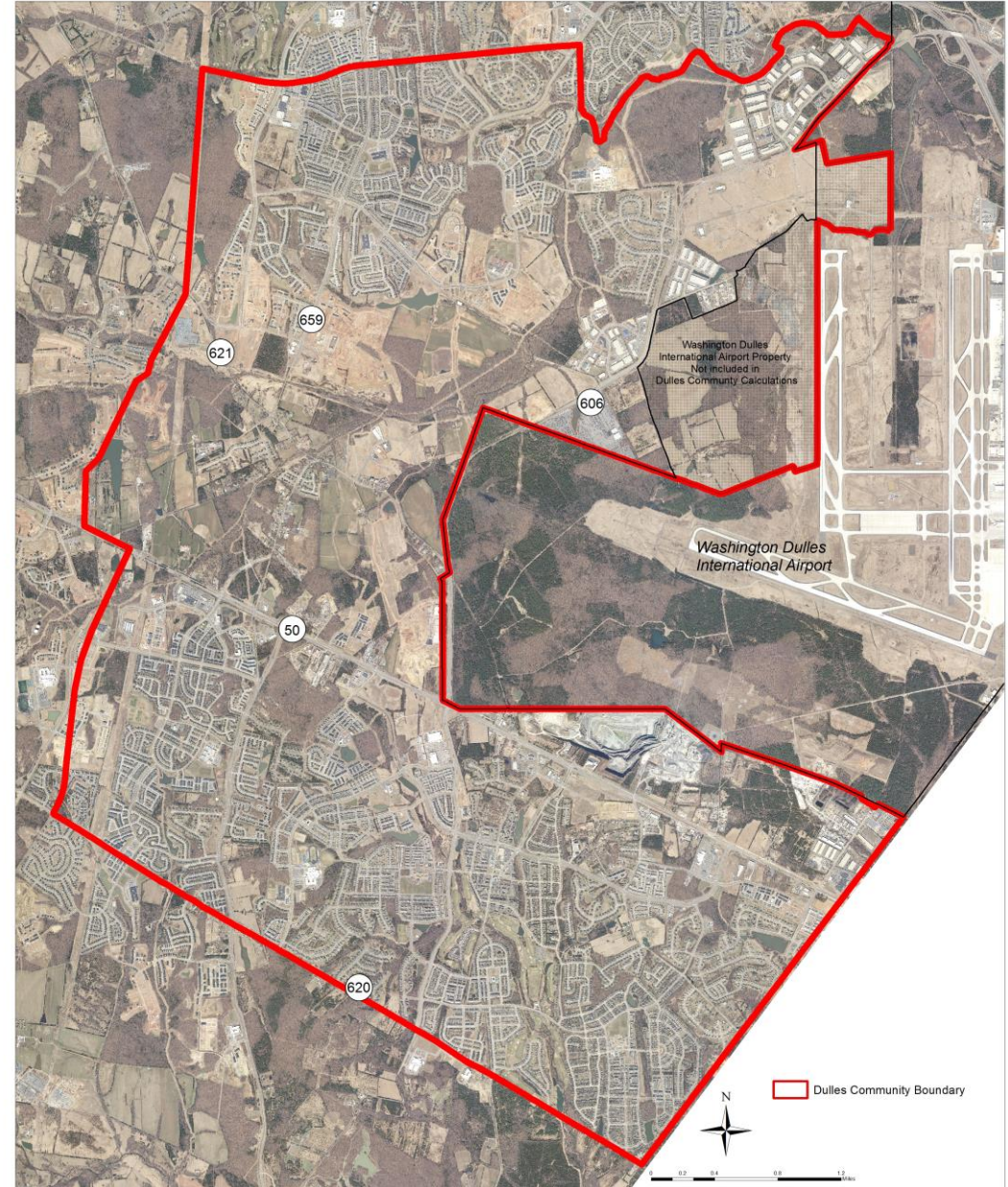
2002 Aerial



Source: Loudoun County Department of Planning and Zoning, December 2014. All boundaries are approximate.

Dulles Community

2014 Aerial



Source: Loudoun County Department of Planning and Zoning, December 2014. All boundaries are approximate.

Demographic Characteristics

▶ Population

- ▶ 2014: 55,137 persons
- ▶ Between 2000 and 2010, population increased 497%

▶ Age of Population

- ▶ 2010: 32.5 years old median age
- ▶ 2010: 24% persons under the age of 19

▶ Employment

- ▶ 2013: 13,700 jobs
- ▶ 2040: 42,000 jobs (*projected*)

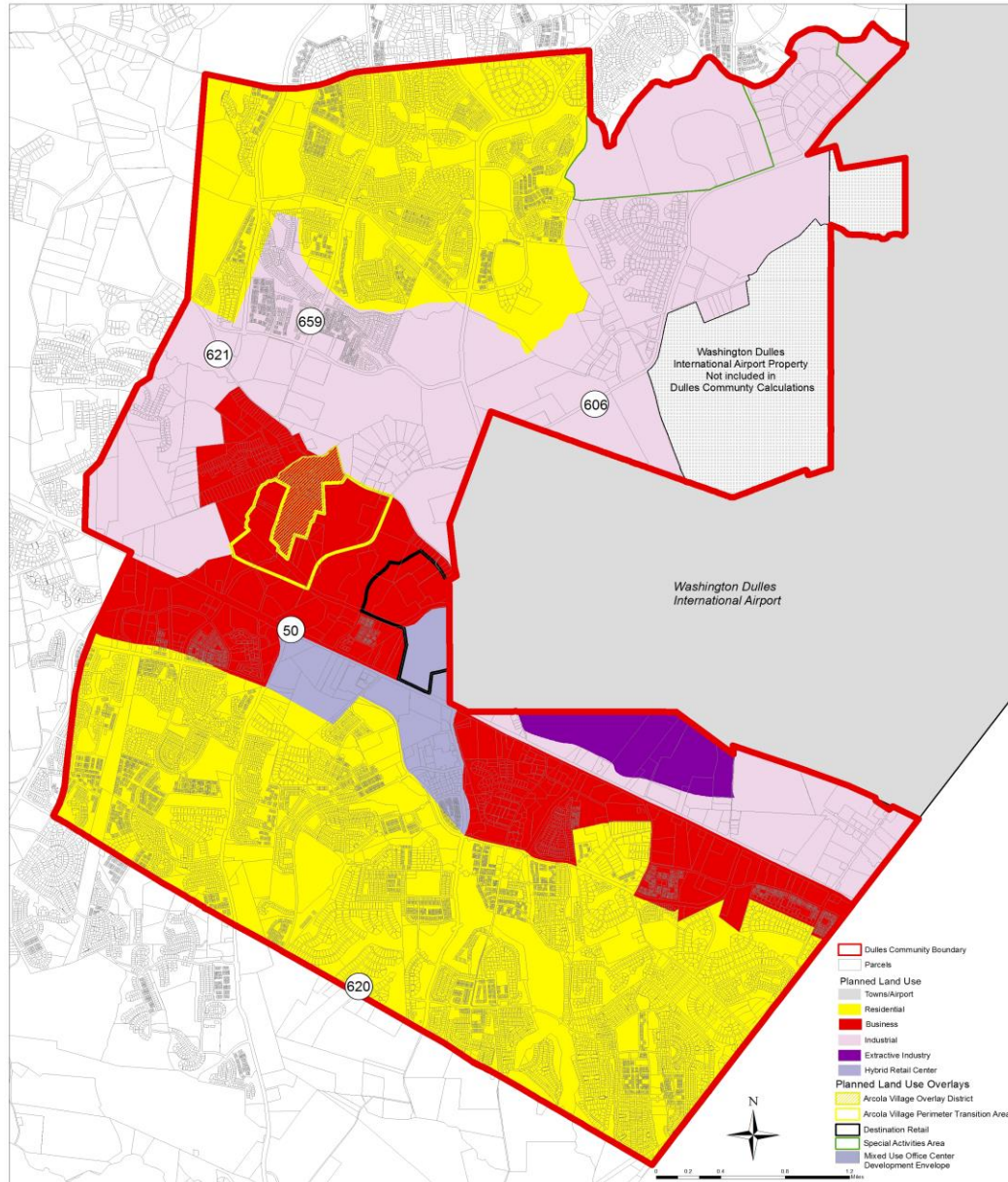
▶ Income

- ▶ \$145,360 median household income (2012 dollars)



Dulles Community

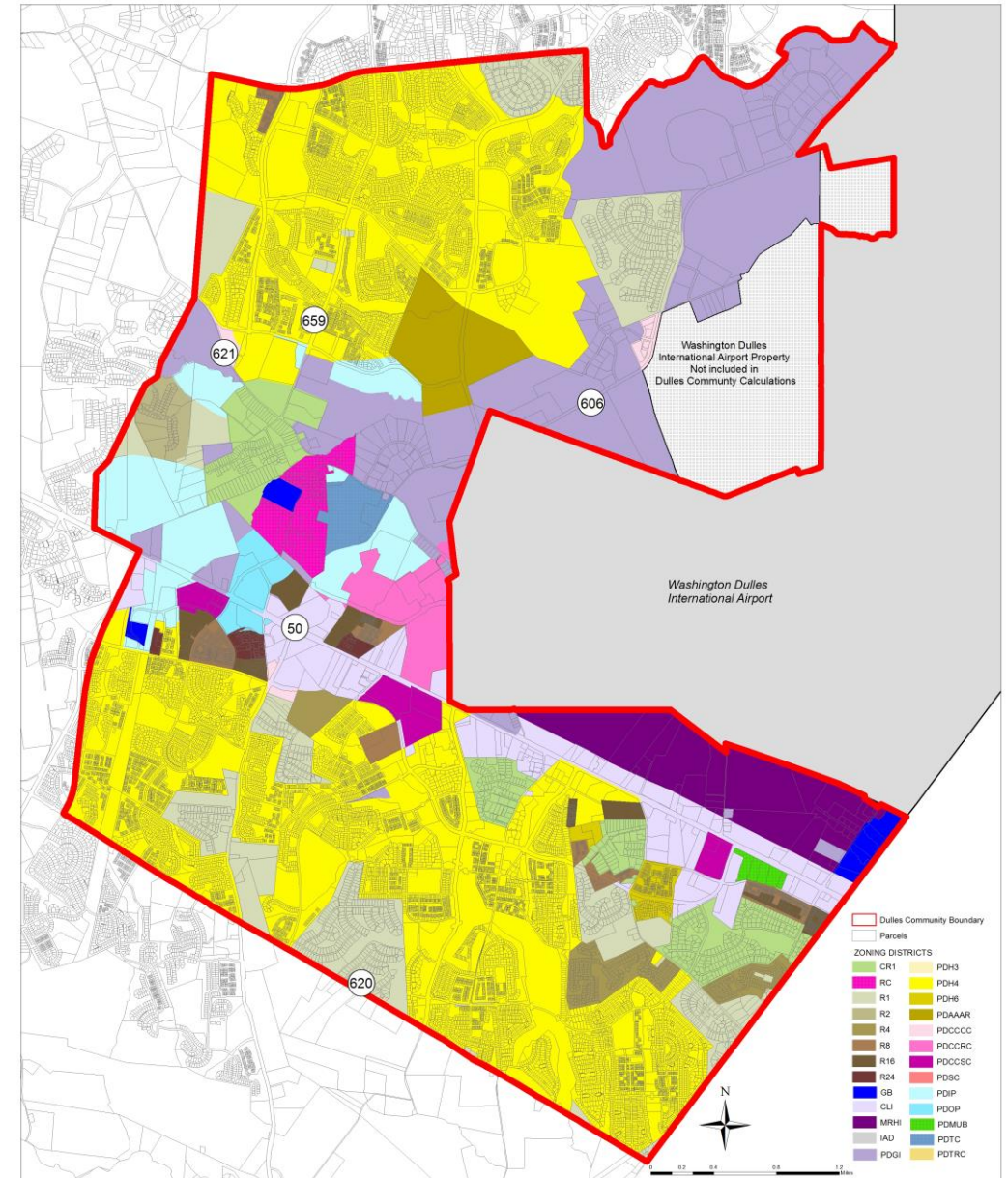
Planned Land Use



Source: Loudoun County Department of Planning and Zoning, December 2014. All boundaries are approximate.

Dulles Community

Existing Zoning

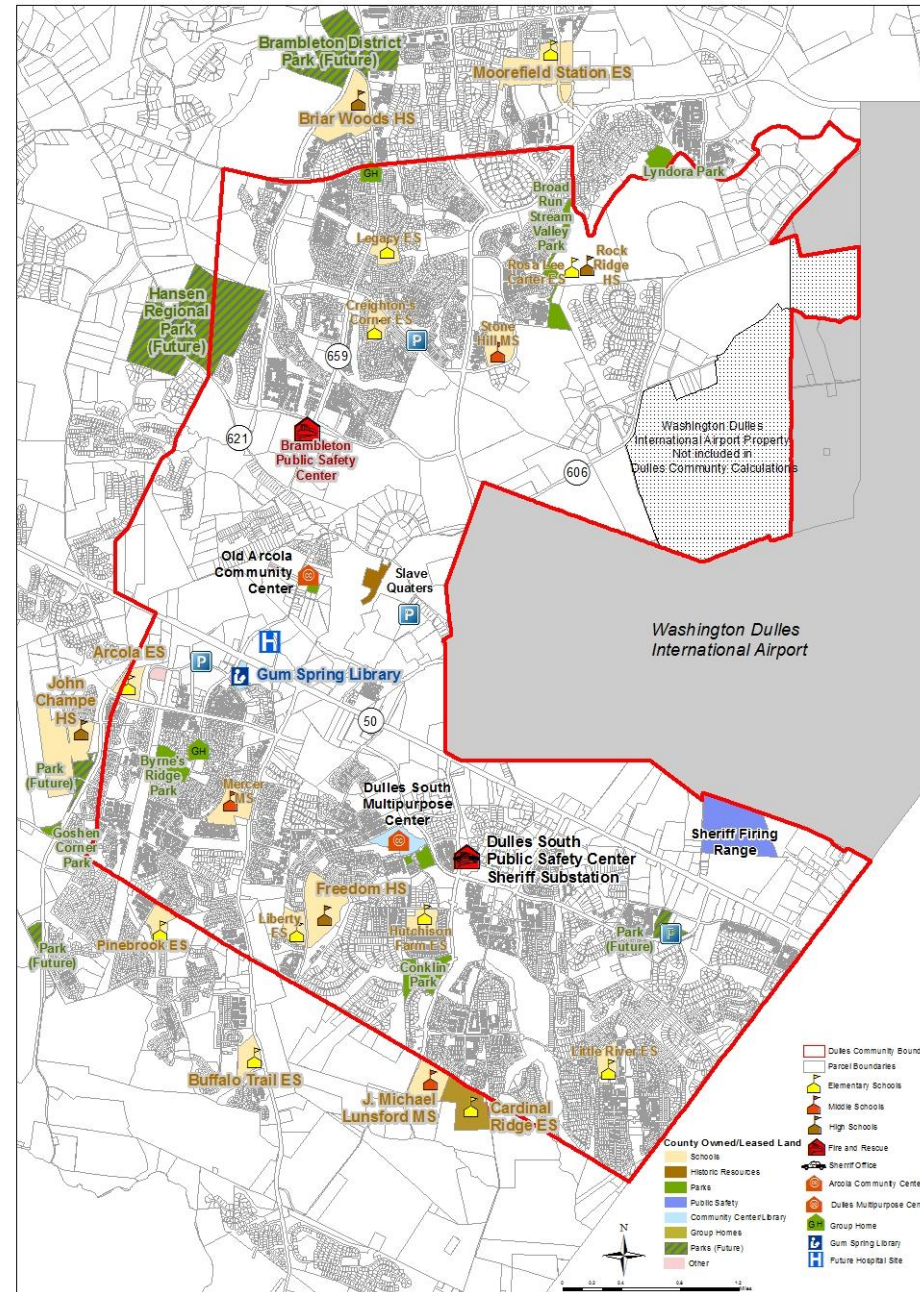


Source: Loudoun County Department of Planning and Zoning, December 2014. All boundaries are approximate.



Community Facilities

- 19 Public Schools Serving Community
 - 4 High Schools
 - 4 Middle Schools
 - 11 Elementary Schools
- 3 Fire & Rescue Stations
- Dulles South Safety Center/Sherriff Station
- Sheriff Firing Range
- 4 County-owned parks
 - 5 rectangular fields & 3 baseball diamonds
- Hal and Bernie Hanson Park (2018)
- Gum Spring Library



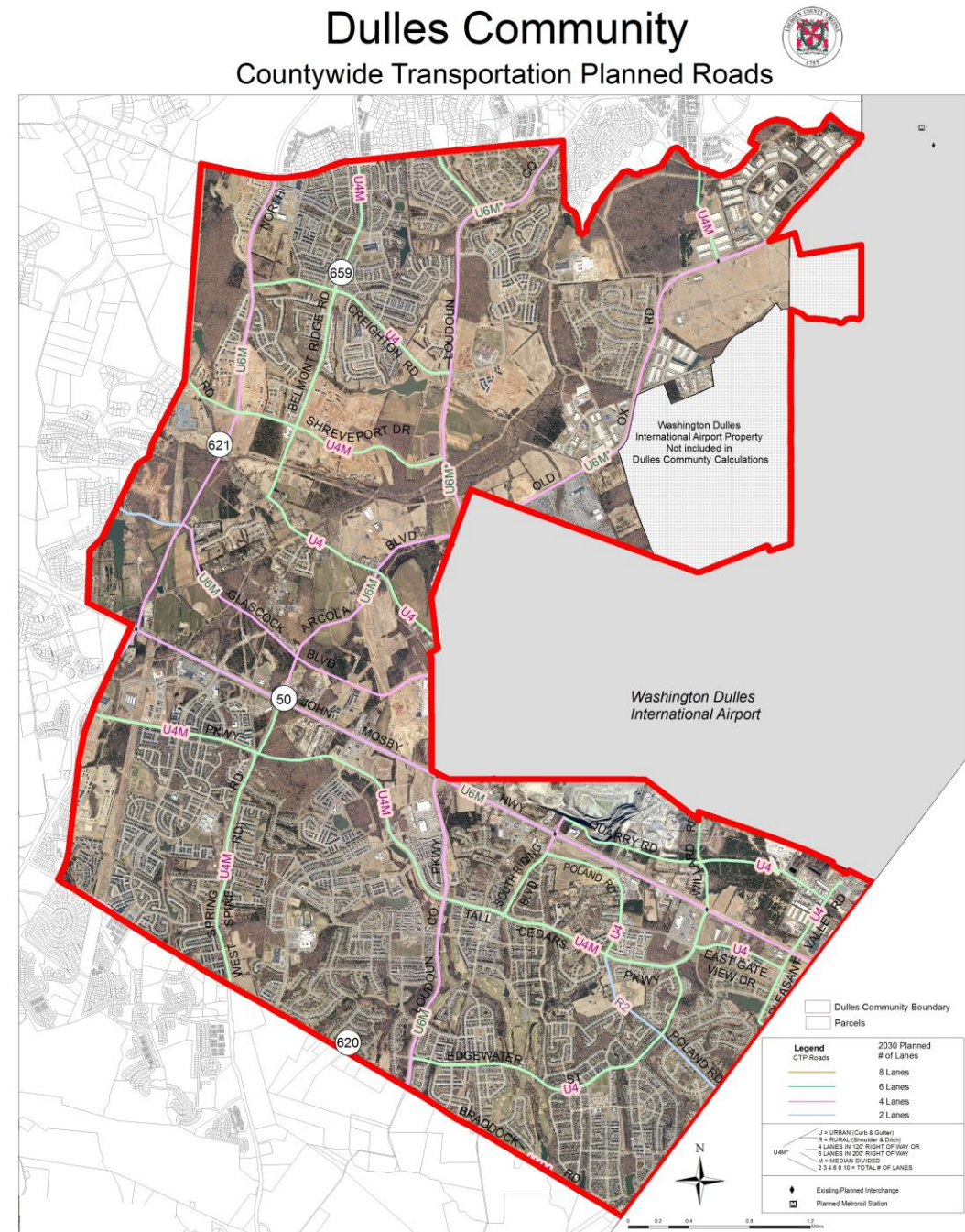
Source: Loudoun County Department of Planning and Zoning, December 2014. All boundaries are approximate.

Major projects

- Route 50
- Route 50 Parallel Roads
- Old Ox Road
- Loudoun County Parkway
- Arcola Boulevard/Gum Spring Road
- Northstar Boulevard
- Belmont Ridge Road
- Shreveport Drive
- Evergreen Mills Road
- Westwind Drive/Ladbroke Drive
- Braddock Road

Other Projects & Studies

- Northern Virginia North-South Corridor
- Bi-County Parkway
- Improved Access to Dulles Airport



Emerging Trends

- ▶ Corridor of Significance
 - ▶ Air cargo and Aviation
 - ▶ Life sciences and Healthcare
- ▶ Projected 34% increase in life science & healthcare services jobs in County through 2022
- ▶ Likely many healthcare services jobs will be located within the Dulles Community





Questions?