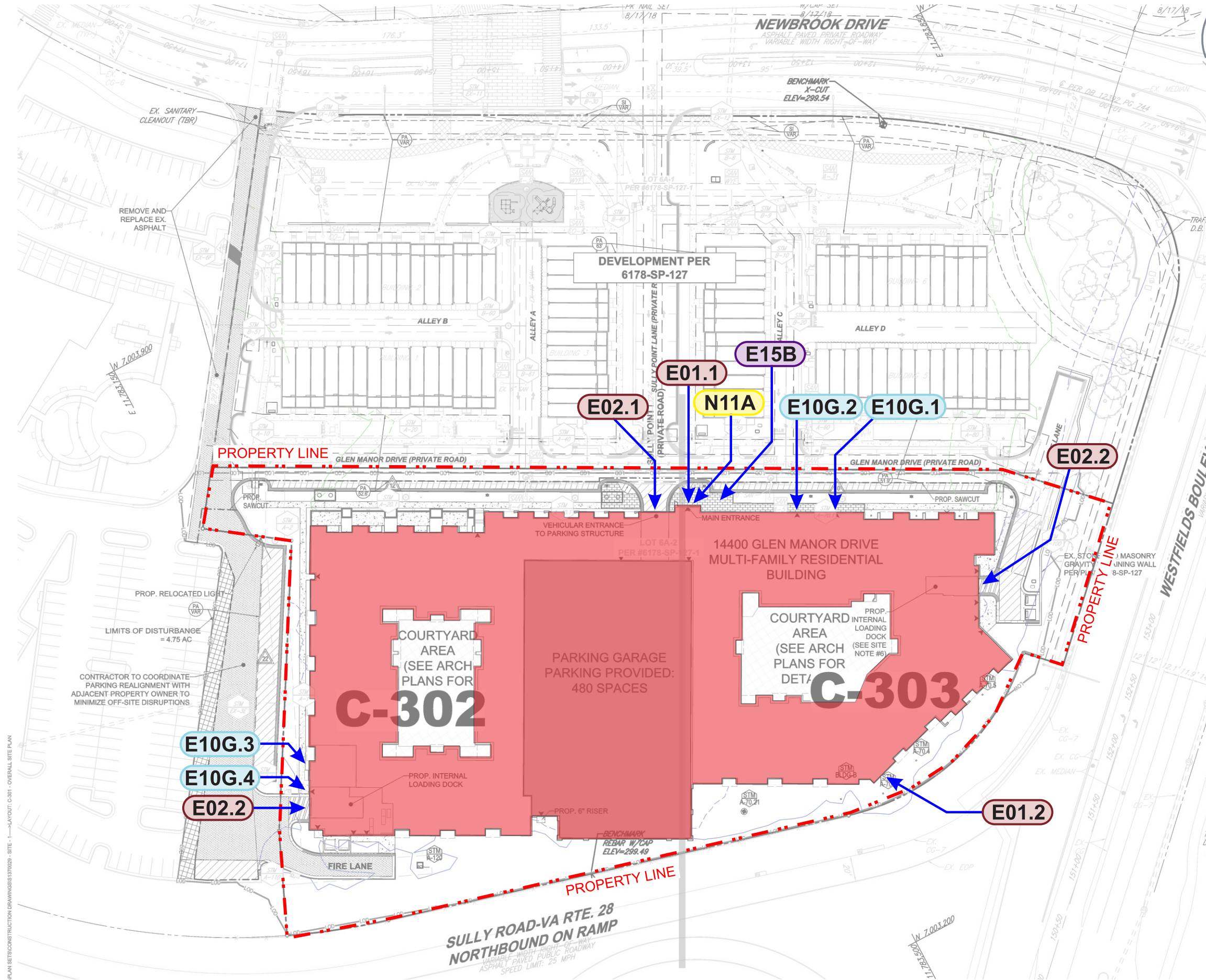


JLB CCI Westfields LLC - The Sully at Westfields Special Exception for Sign Modifications September 3, 2024

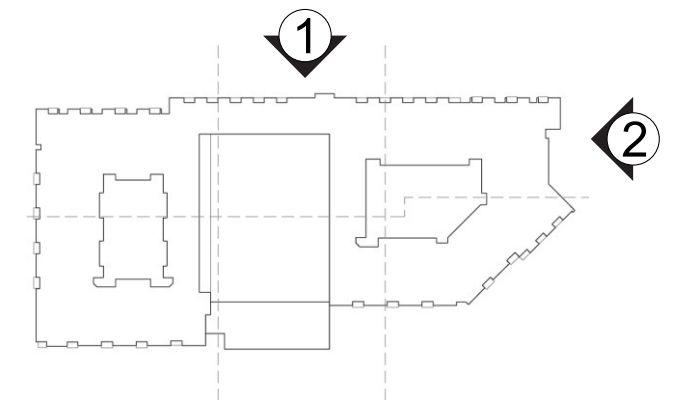
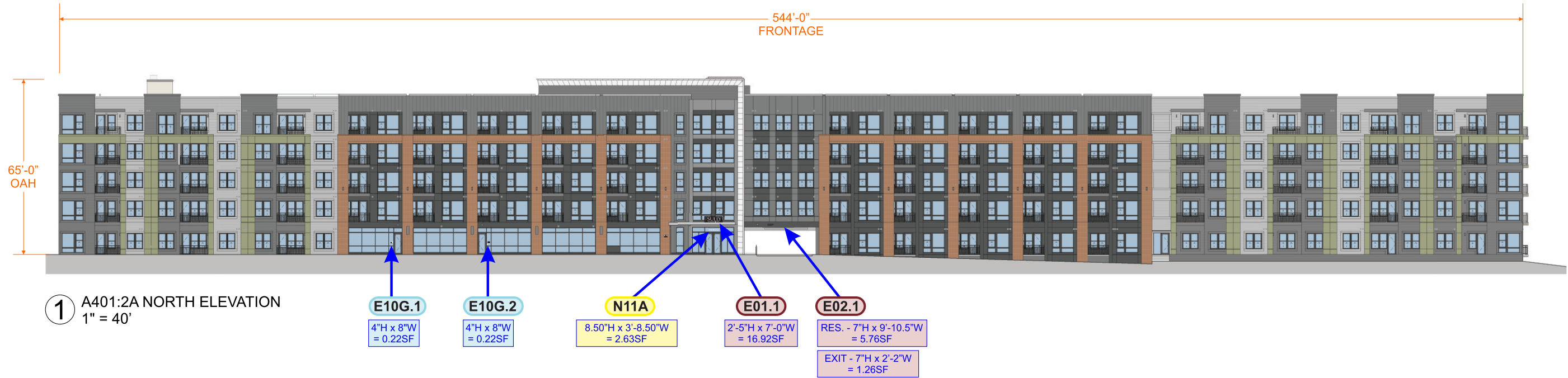
INDEX

2. Site Plan
3. Sign Matrix
4. Elevations - North & East
5. Elevations - Southeast & West
6. E01.1 Canopy Sign - North
7. E01.2 Wall Letters - Southeast
8. E02.1 Resident Parking Letters - North
9. E02.2 Loading Letters - East & West
10. E10G.1 - Exterior ID - North
11. E10G.2 - Exterior ID - North
12. E10G.3 - Exterior ID - West
13. E10G.4 - Exterior ID - West
14. E15B - Wind Sign - North
15. N11A Address Vinyl - North

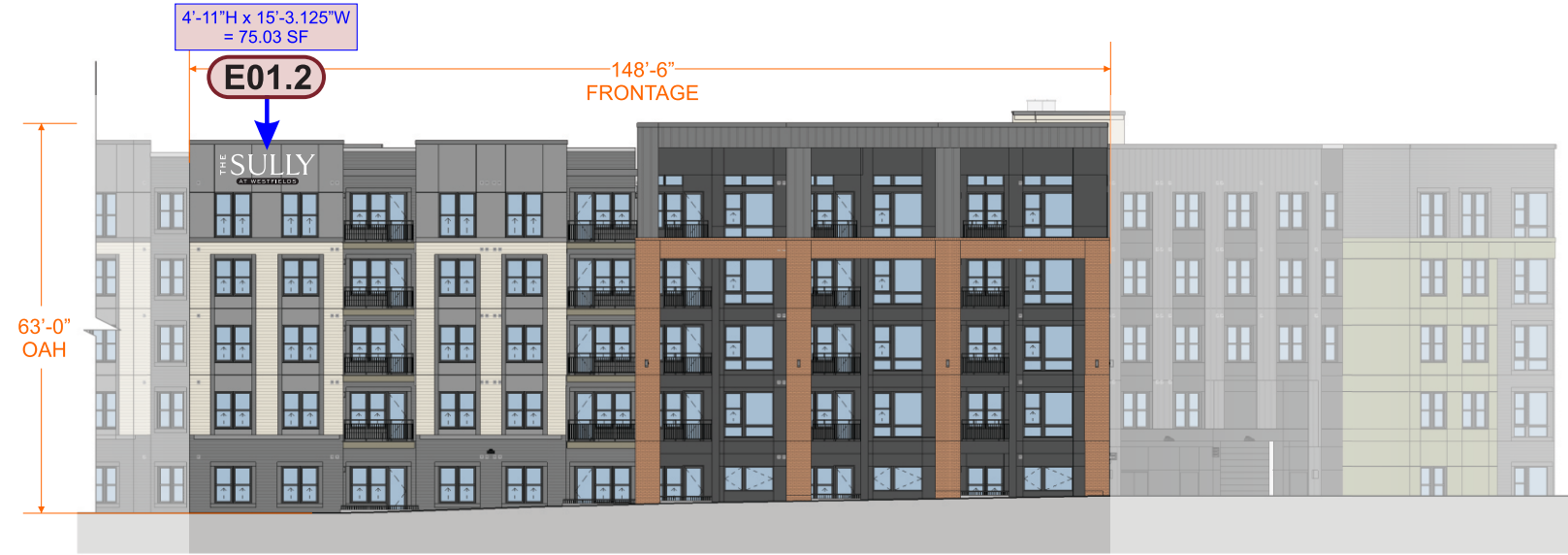


- E01.1** Canopy Sign - North
- E01.2** Wall Sign - Southeast
- E02.1** Resident Parking Letters - North
- E02.2** Loading Letters - West
- E02.2** Loading Letters - East
- E10G.1** Exterior ID - North
- E10G.2** Exterior ID - North
- E10G.3** Exterior ID - West
- E10G.4** Exterior ID - West
- E15B** Wind Sign - North
- N11A** Vinyl Address - North

PLAN SETS CONSTRUCTION DRAWINGS 1370209 - SITE - 1 - LAYOUT: C-301 - OVERALL SITE PLAN



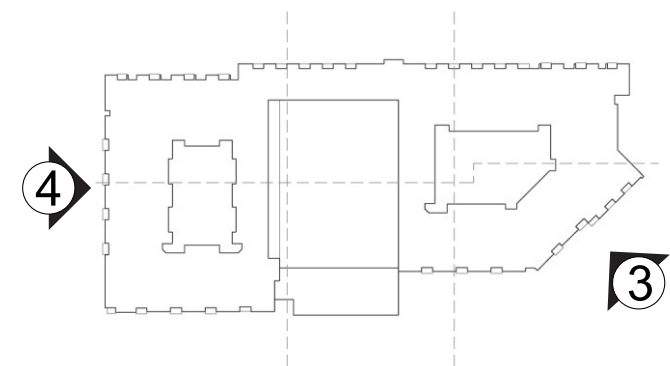
KEY PLAN



③ A401:4H SOUTHEAST ELEVATION
1" = 30'



④ A401:9E WEST ELEVATION
1" = 30'



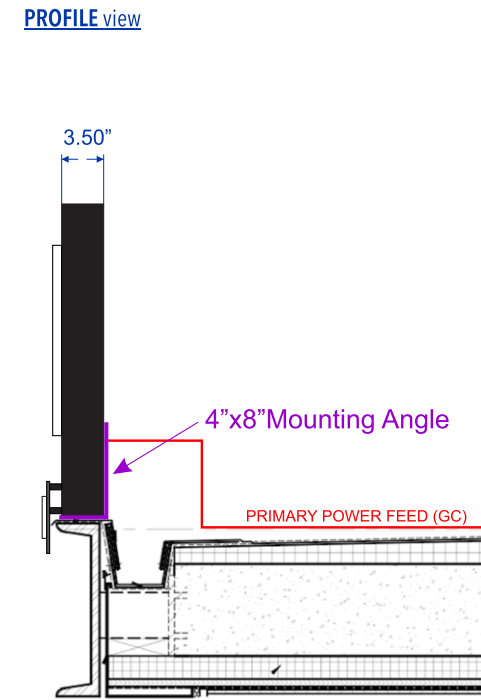
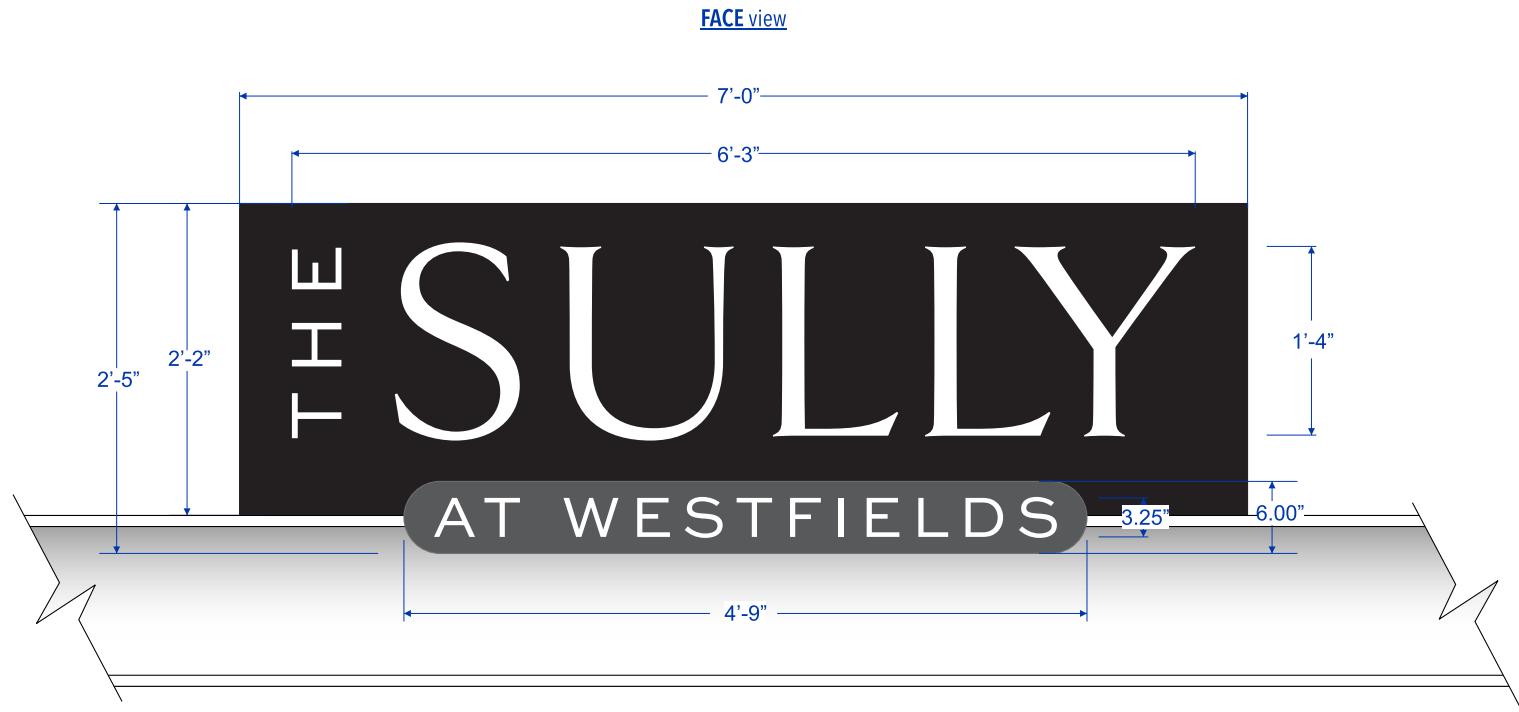
KEY PLAN

- COLORS & FINISHES**
- Black
 - White
 - PMS Cool Gray 10 C

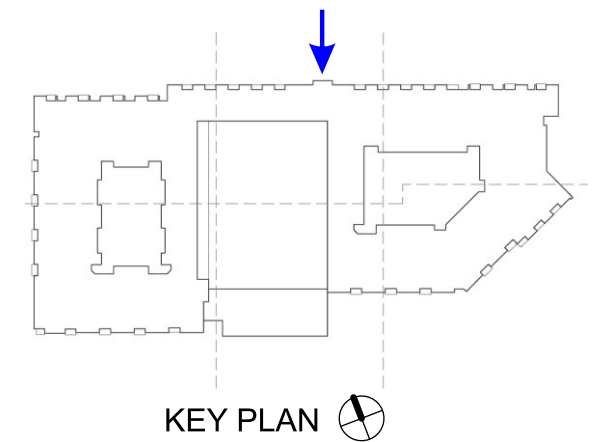
colors shown are representation only

- SPECIFICATIONS**
- Cabinet**
3.5" deep aluminum construction
Painted face and returns
 - "THE SULLY" copy (Illuminated)**
1" push through acrylic - 3/4" reveal
Internal white LEDs for face and edge lighting.
 - "AT WESTFIELDS" panel (Non-illuminated)**
1/4" aluminum
Painted face and returns
mounted to cabinet with 1" spacers
Copy is 3/8" white acrylic
Flush mounted to panel
 - Mounting Angle**
4"x8"x72" steel angle (GC)
 - Power requirements**
120V, 20 amp dedicated circuit

- INSTALLATION**
- Mount method**
Site GC to provide 4" x 8" x 72" x 1/4" steel angle
Sign secures to angle with 3/8" thru-bolts



A401:2A NORTH ELEVATION (PARTIAL)
1" = 5'



Estimated sign weight: 60 lbs.
Estimated mounting/support weight: 41 lbs.
Total estimated weight: 100 lbs.

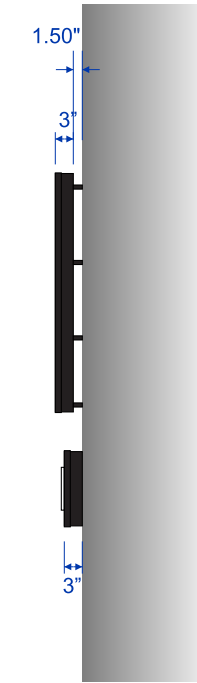
Height	Width	Sq. Ft.
2'-5"	7'-0"	16.92

Scale 3/4"=1'	Sign Code E01.1 Canopy sign	Qty 1
------------------	--	----------

FACE view



PROFILE view



- COLORS & FINISHES**
- Black
 - White

© Copyright 2024
All original artwork and design is the sole property of MaineLine Graphics, LLC, and all rights are reserved until services rendered to client are paid in full.

colors shown are representation only

- SPECIFICATIONS**
- Dimensional letters**
3" deep aluminum channel
Painted returns
White diffuser acrylic back
Internal LEDs for halo lighting
1.5" Spacers
 - "AT WESTFIELDS" Cabinet**
3" fabricated aluminum, flush mounted
Painted face and returns
Copy is 3/4" push through acrylic, 1/2" reveal. Internal LEDs for face and edge lit illumination.
 - Power requirements**
120V, 20 amp dedicated circuit

JLB CCI Westfields LLC
The Sully at Westfields
14400 Glen Manor Drive
Chantilly, VA 20151

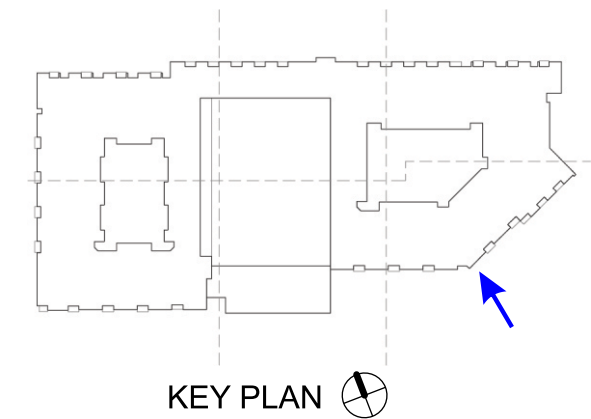
Project Manager
J Gould
Designer
M Anfuso

Rev.

- INSTALLATION**
- Mount method**
Site GC to provide 2x wood blocking behind sign area
Site GC to provide powered junction box with disconnect switch at remote power supply location
LV wires from power supply location to each letter and cabinet to be pre-installed by site GC
Paper template to be provided by Maineline
 - Letters/cabinet are mounted with lag screws and spacers.
Each includes removable face for installation and servicing.



A401:4H SOUTHEAST ELEVATION (PARTIAL)
1" = 10'



Estimated sign weight: 100 lbs.

Height	Width	Sq. Ft.
4'-11"	15'-3.125"	75.03

Scale 3/8"=1'	Sign Code E01.2 Wall Letters	Qty 1
------------------	---	----------

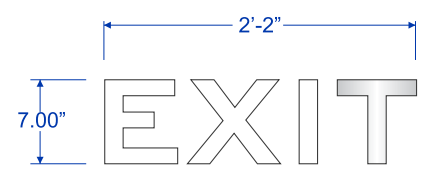
Brushed Aluminum

colors shown are representation only

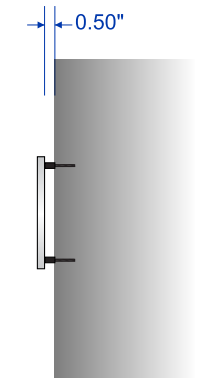
SPECIFICATIONS
Dimensional letters -
NON-ILLUMINATED
3/8" flat cut aluminum
1/2" PVC spacers

INSTALLATION
Mounting
Mounts to wall with threaded studs, spacers, and silicone adhesive

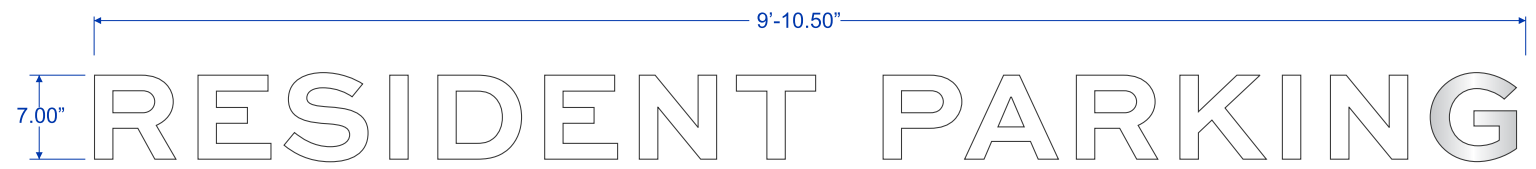
FACE view



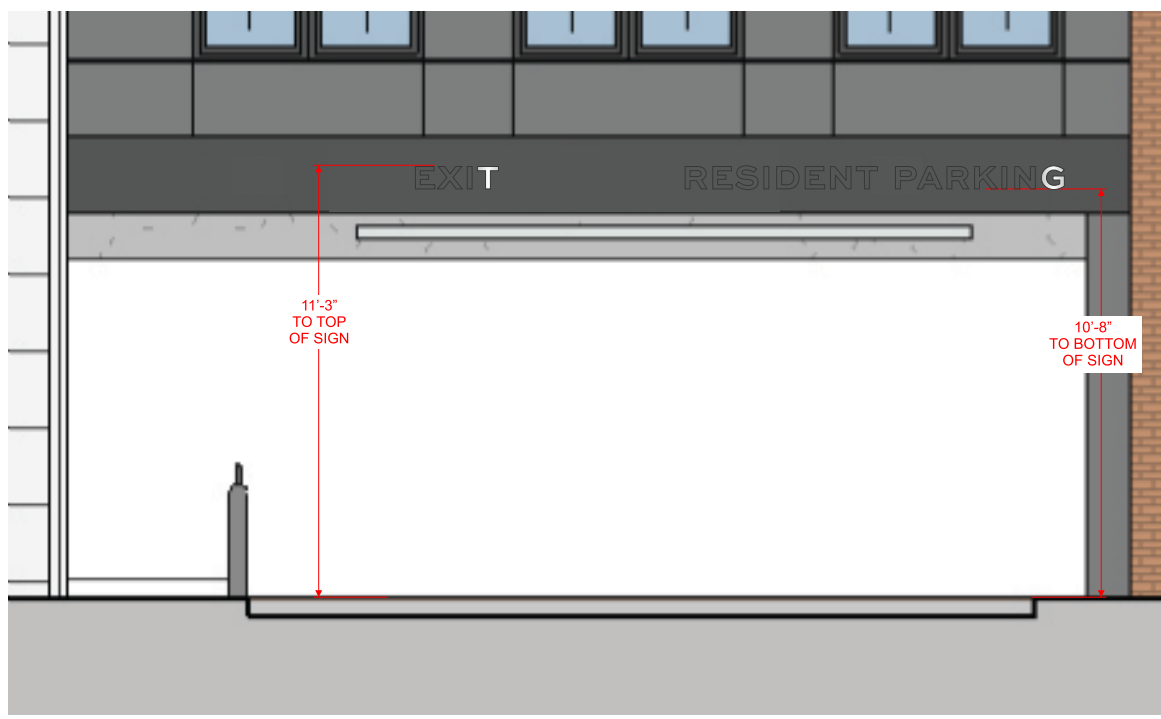
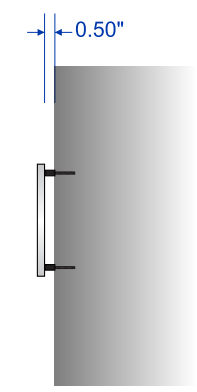
PROFILE view



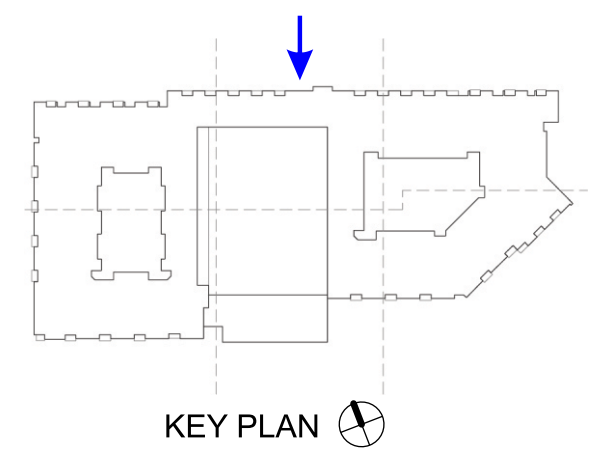
FACE view



PROFILE view



A401:2A NORTH ELEVATION (PARTIAL)
1" = 5'



KEY PLAN

EXIT		
Height	Width	Sq. Ft.
7"	2'-2"	1.26

RESIDENT PARKING		
Height	Width	Sq. Ft.
7"	9'-10.5"	5.76

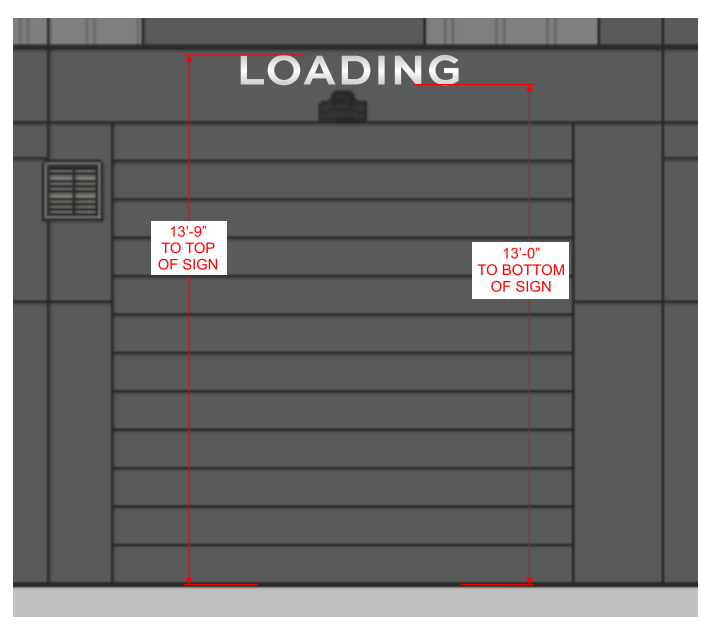
Scale 3/4"=1'	Sign Code E02.1	Qty
	Resident Parking Letters - North	1

COLORS & FINISHES  Brushed Aluminum

SPECIFICATIONS
Dimensional letters - NON-ILLUMINATED
3/8" flat cut aluminum
1/2" PVC spacers

INSTALLATION
Mounting
Mounts to wall with threaded studs, spacers, and silicone adhesive

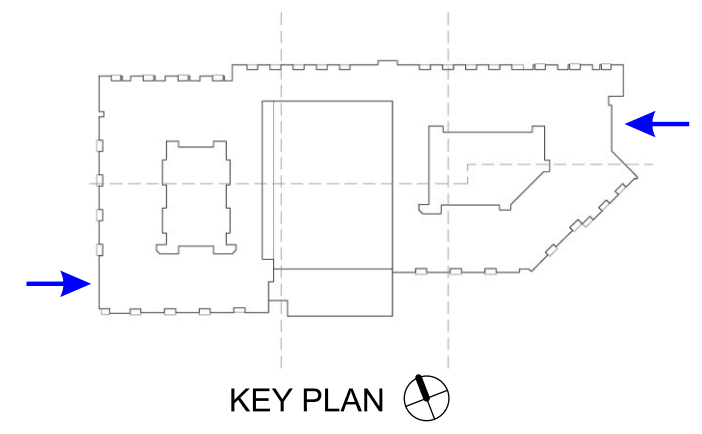
colors shown are representation only



A401:4A EAST ELEVATION (PARTIAL)
1" = 5'



A401:9E WEST ELEVATION (PARTIAL)
1" = 5'



Height	Width	Sq. Ft.
9"	5'-8"	4.25

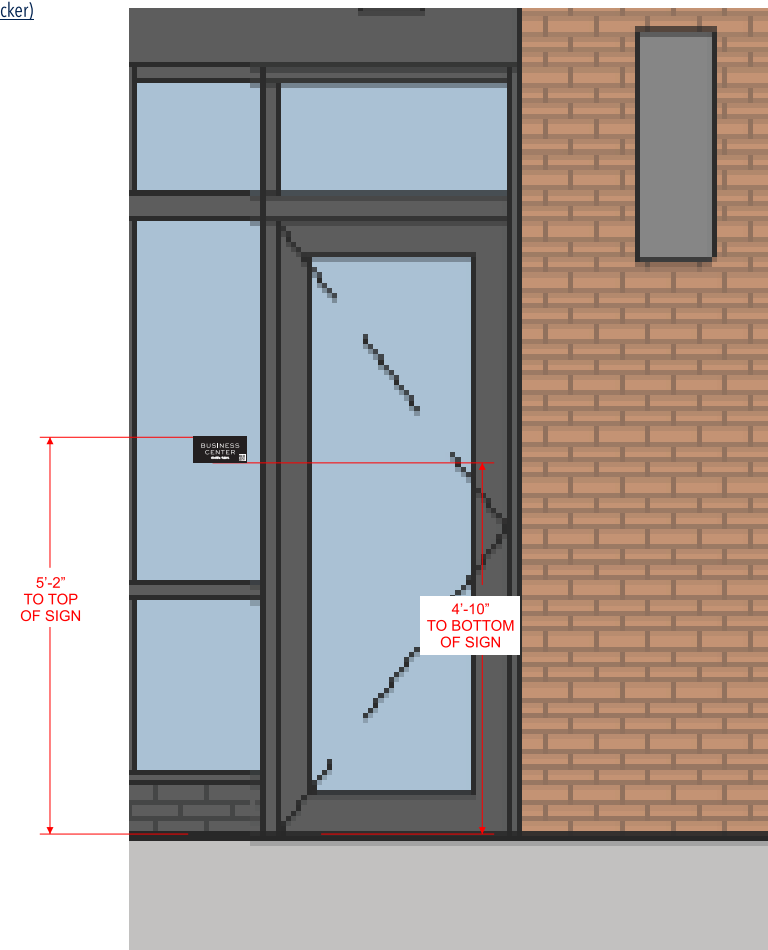
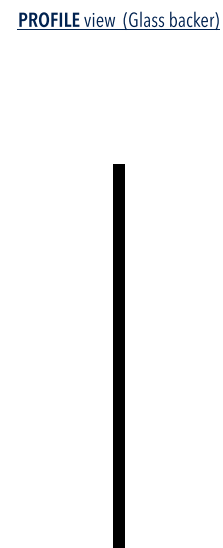
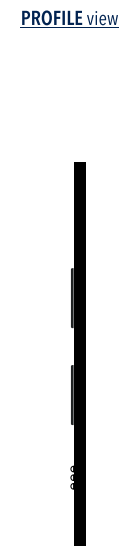
Scale 1:10	Sign Code E02.2 Loading Letters - West/East	Qty 2
---------------	--	----------

- COLORS & FINISHES**
- SW 6203 Spare White
 - PMS 426 C
 - black (ACP returns)

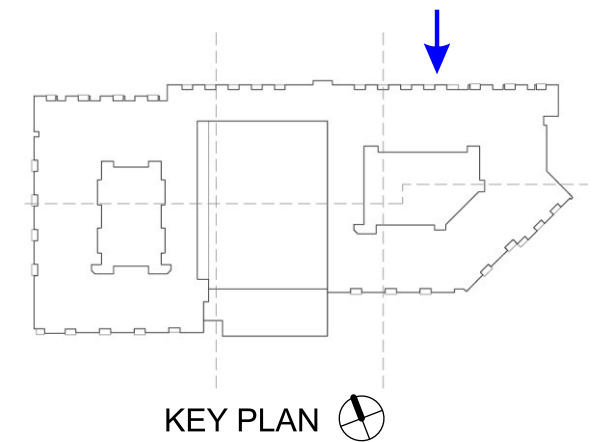
colors shown are representation only

- SPECIFICATIONS**
- Sign panel**
1/8" ACP
Painted
 - Copy & Braille**
Direct-to-board dimensional print
Clear Braille, center aligned
 - QR code**
Direct-to-board flat UV print on the face
 - Glass backer panel**
1/8" ACP
Painted

- INSTALLATION**
- Mount method**
VHB double stick tape
 - Mount surface**
Glass
 - Mount height**
60" on center



A401:2A NORTH ELEVATION (PARTIAL)
1" = 2 1/2'



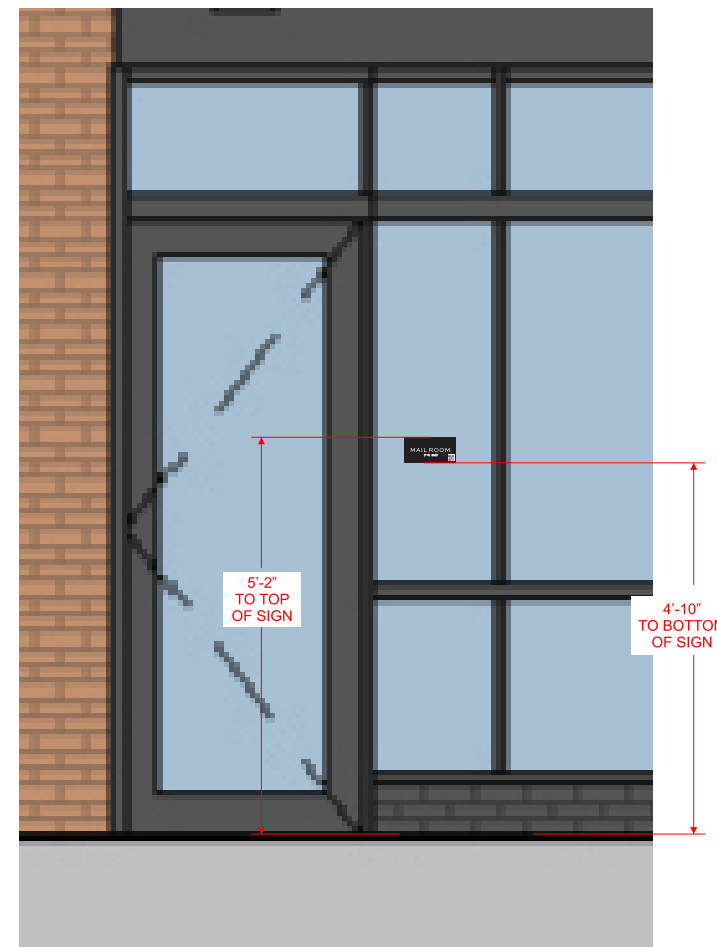
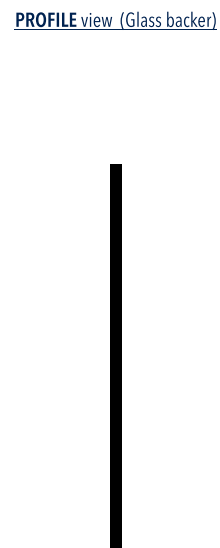
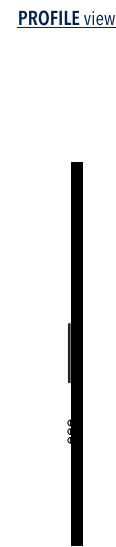
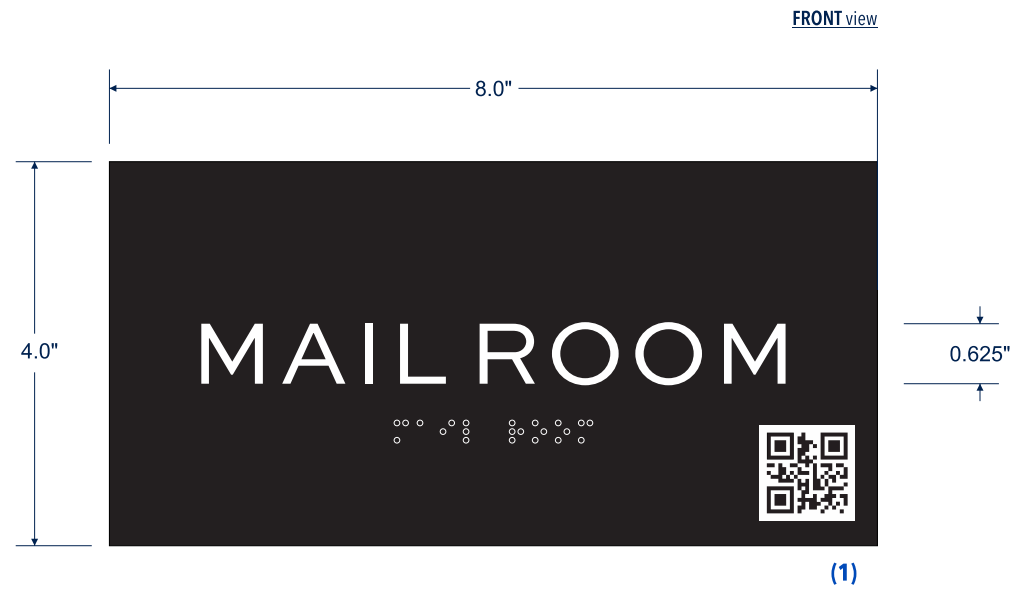
Height	Width	Sq. Ft.
4"	8"	0.22

- COLORS & FINISHES**
- SW 6203 Spare White
 - PMS 426 C
 - black (ACP returns)

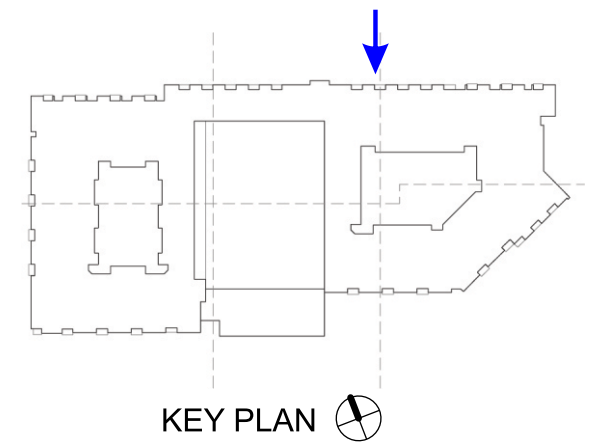
colors shown are representation only

- SPECIFICATIONS**
- Sign panel**
1/8" ACP
Painted
 - Copy & Braille**
Direct-to-board dimensional print
Clear Braille, center aligned
 - QR code**
Direct-to-board flat UV print on the face
 - Glass backer panel**
1/8" ACP
Painted

- INSTALLATION**
- Mount method**
VHB double stick tape
 - Mount surface**
Glass
 - Mount height**
60" on center



A401:2A NORTH ELEVATION (PARTIAL)
1" = 2 1/2'



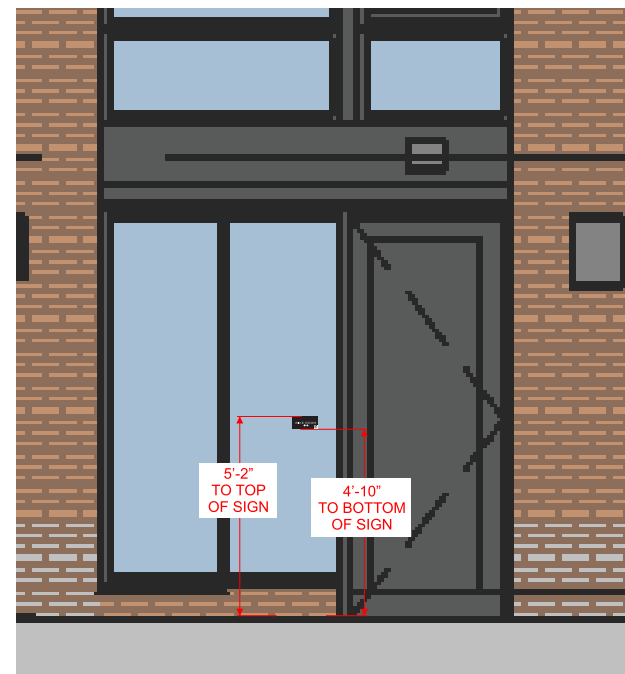
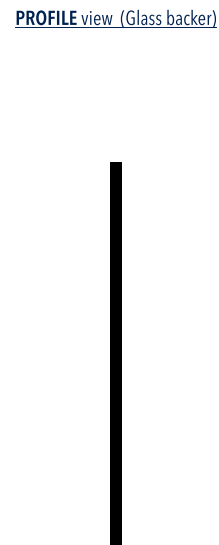
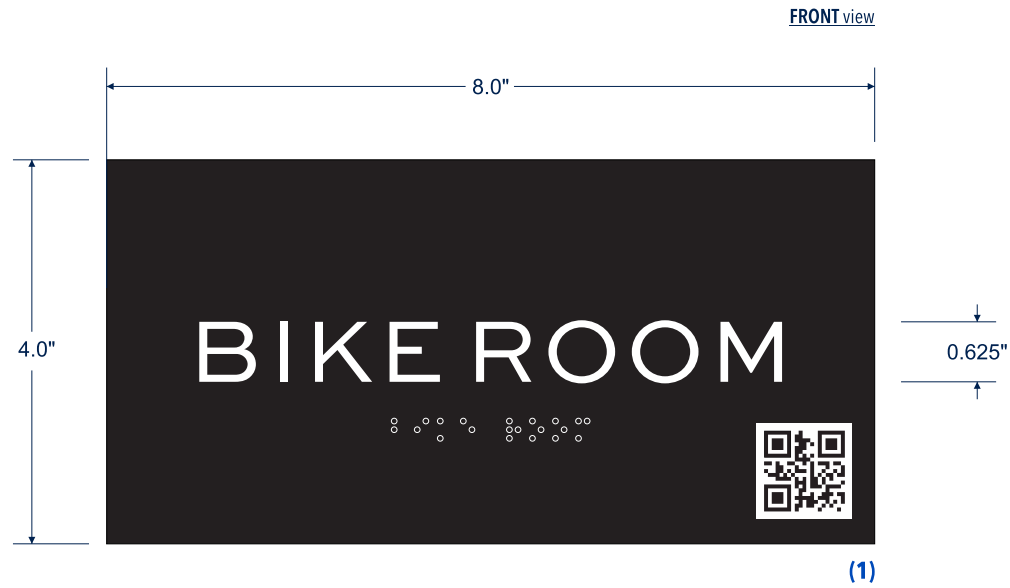
Height	Width	Sq. Ft.
4"	8"	0.22

- COLORS & FINISHES**
- SW 6203 Spare White
 - PMS 426 C
 - black (ACP returns)

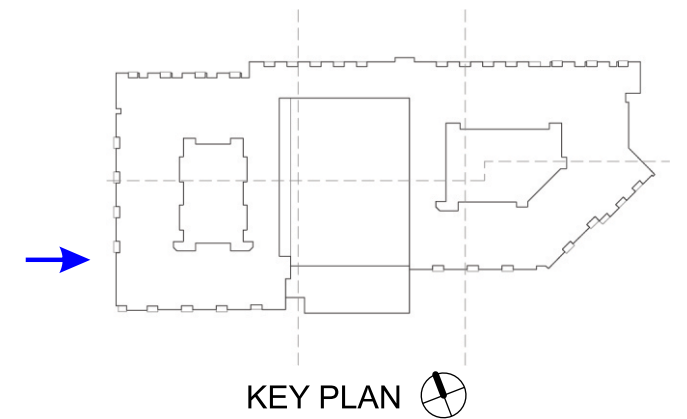
colors shown are representation only

- SPECIFICATIONS**
- Sign panel**
1/8" ACP
Painted
 - Copy & Braille**
Direct-to-board dimensional print
Clear Braille, center aligned
 - QR code**
Direct-to-board flat UV print on the face
 - Glass backer panel**
1/8" ACP
Painted

- INSTALLATION**
- Mount method**
VHB double stick tape
 - Mount surface**
Glass
 - Mount height**
60" on center



A401:9E WEST ELEVATION (PARTIAL)
1" = 5'



Height	Width	Sq. Ft.
4"	8"	0.22

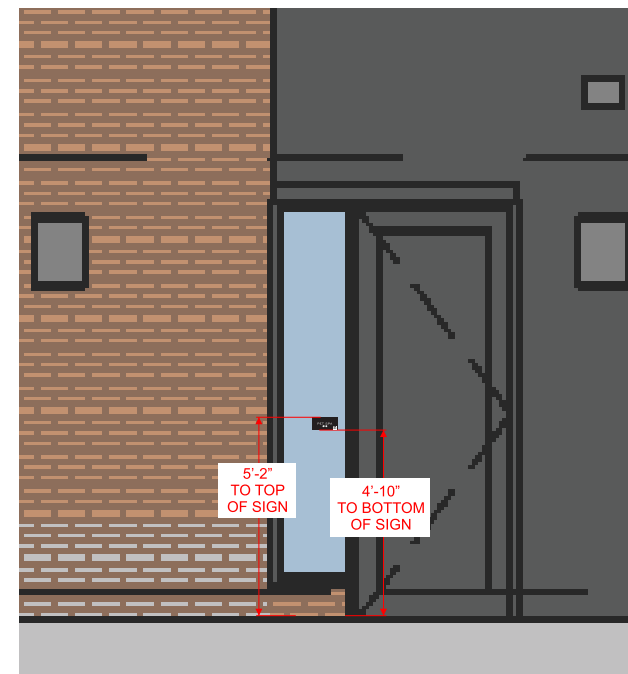
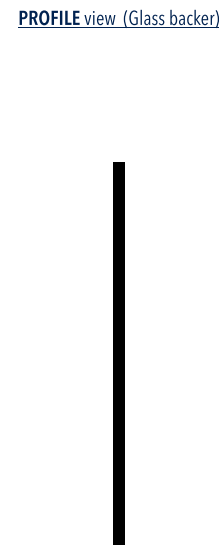
Scale 1:2	Sign Code E10G.3 Exterior Room ID - Glass	Qty 1
---------------------	---	-----------------

- COLORS & FINISHES**
- SW 6203 Spare White
 - PMS 426 C
 - black (ACP returns)

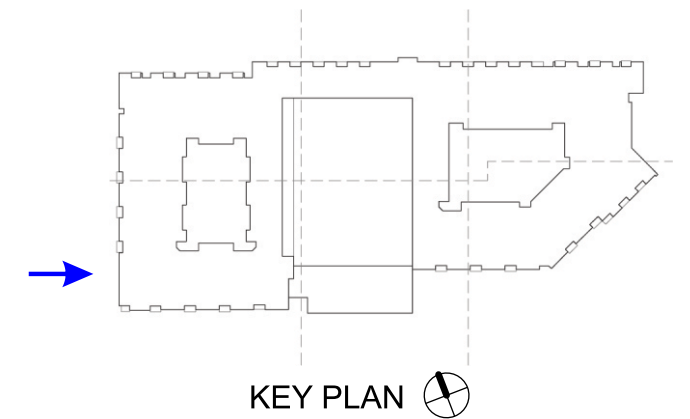
colors shown are representation only

- SPECIFICATIONS**
- Sign panel**
1/8" ACP
Painted
 - Copy & Braille**
Direct-to-board dimensional print
Clear Braille, center aligned
 - QR code**
Direct-to-board flat UV print on the face
 - Glass backer panel**
1/8" ACP
Painted

- INSTALLATION**
- Mount method**
VHB double stick tape
 - Mount surface**
Glass
 - Mount height**
60" on center



A401:9E WEST ELEVATION (PARTIAL)
1" = 5'



Height	Width	Sq. Ft.
4"	8"	0.22

Scale 1:2	Sign Code E10G.4 Exterior Room ID - Glass	Qty 1
---------------------	---	-----------------

- COLORS & FINISHES**
- TBD
 - White
 - Black

colors shown are representation only

SPECIFICATIONS
Back/front layer
Double face snap frame wind sign (WS1810). Two full color printed Coroplast panel inserts.

JLB CCI Westfields LLC
The Sully at Westfields
14400 Glen Manor Drive
Chantilly, VA 20151

Project Manager
J Gould
Designer
M Anfuso

Rev.

INSTALLATION
Mount method
Freestanding



Height	Width	Sq. Ft.
3'-0"	2'-0"	6

Scale 1:10	Sign Code E15B Exterior Other - Wind Sign	Qty 1
---------------	--	----------

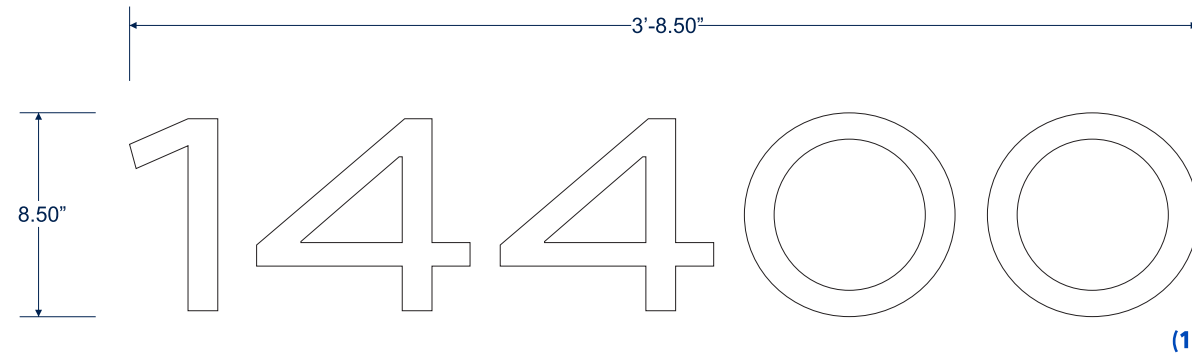
COLORS & FINISHES White

colors shown are representation only

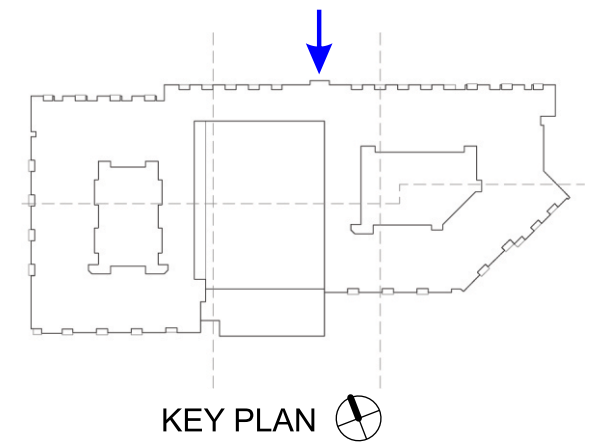
SPECIFICATIONS
Address Numbers
Forward cut white vinyl
Applied to exterior of glass

INSTALLATION
Mount method
Self adhesive
Mount surface
Glass

FRONT view



A401:2A NORTH ELEVATION (PARTIAL)
1" = 5'



KEY PLAN

Height	Width	Sq. Ft.
8.5"	3'-8.5"	2.63