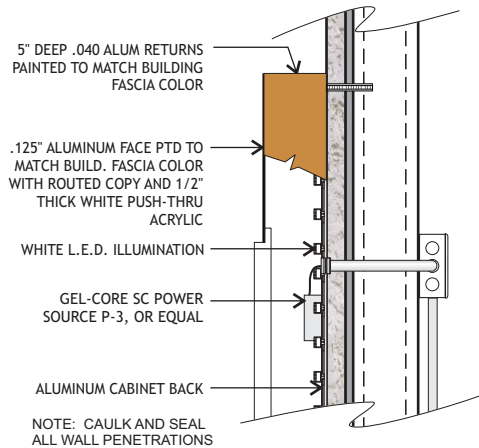


# SIGN X5.01

## LETTER CABINET:

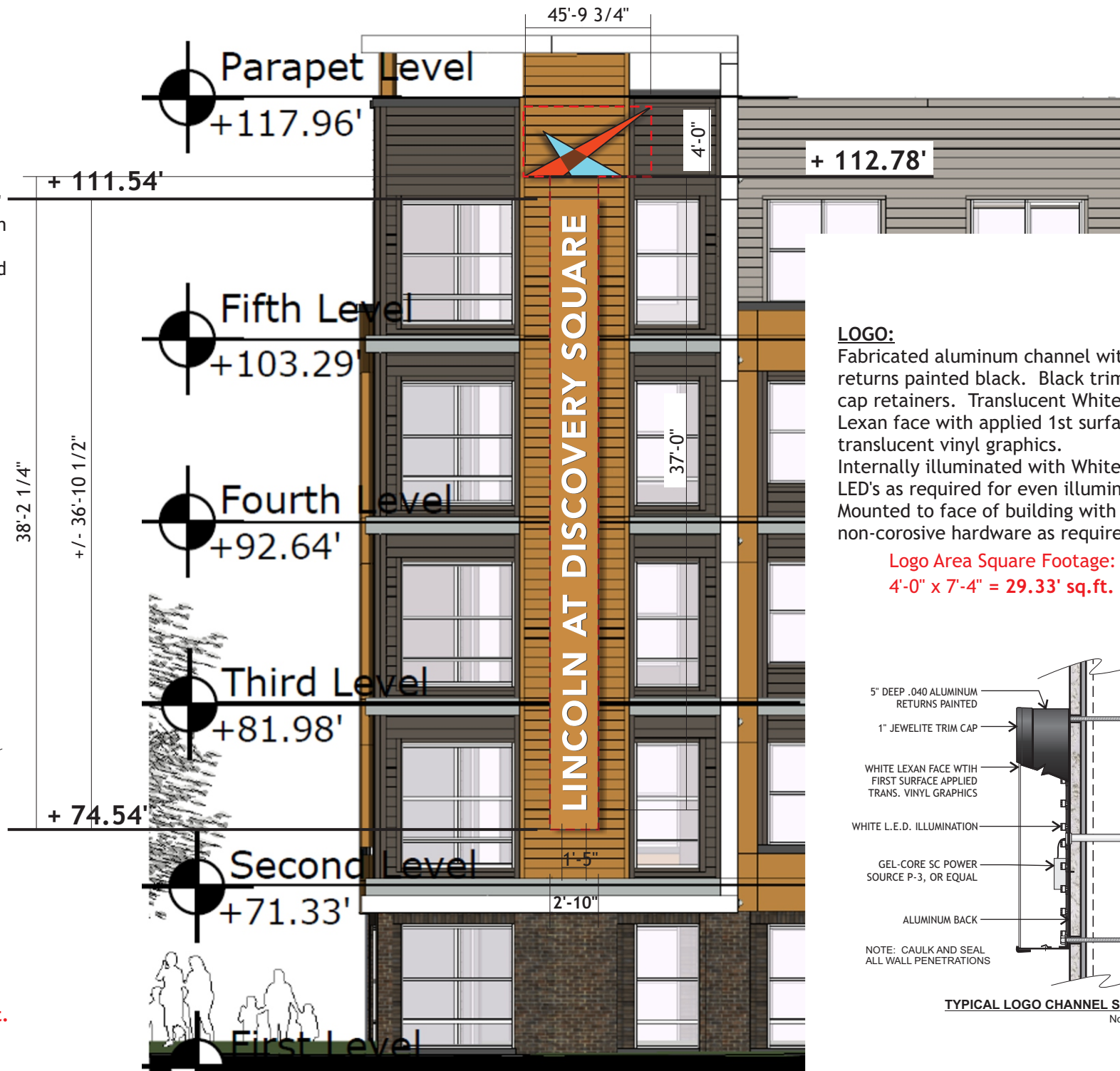
Fabricated aluminum cabinet painted to match building. "LINCOLN...SQUARE" copy to be routed out of .125" aluminum face with 1/2" thick translucent White push-thru letters. Internally illuminated with White LED's as required for even illumination. Mounted to face of building with non-corrosive hardware as required.

Letter Area Square Footage:  
 $2'-10" \times 38'-2 \frac{1}{4}" = 108.2' \text{ sq.ft.}$



TYPICAL LETTER CABINET SECTION  
 Not To Scale

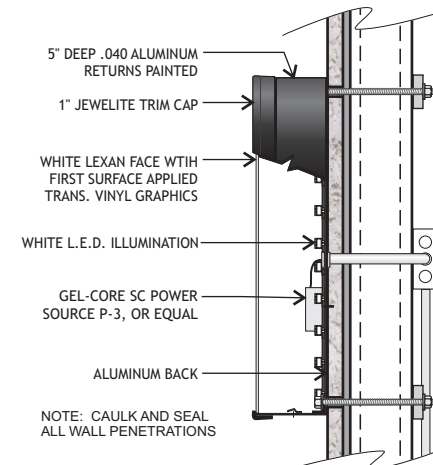
Total Square Foot of Signage,  
 calculated using 8 continuous  
 straight lines, this Elevation  
 $108.2 + 29.33 = 137.53' \text{ sq.ft.}$



## LOGO:

Fabricated aluminum channel with returns painted black. Black trim cap retainers. Translucent White Lexan face with applied 1st surface translucent vinyl graphics. Internally illuminated with White LED's as required for even illumination. Mounted to face of building with non-corrosive hardware as required.

Logo Area Square Footage:  
 $4'-0" \times 7'-4" = 29.33' \text{ sq.ft.}$



TYPICAL LOGO CHANNEL SECTION  
 Not To Scale



ad vice studios, LLC  
 6400 mechanicsville turnpike  
 suite 200  
 mechanicsville, va 23111  
 phone: (804) 730-0503  
 fax: (804) 746-5210  
 www.adviceStudios.com

Copyright ad vice studios, LLC 2015

This sign must be U.L. Listed and approved with external disconnect switch to match NEC.  
 ELECTRICAL REQUIREMENTS UNLESS OTHERWISE SPECIFIED:  
 120 VOLT FOR MAX. OF 20-AMP CIRCUIT(S).

This drawing is the sole property of ad vice studios, LLC. Reproduction of these drawings is strictly prohibited without the written consent of ad vice studios, LLC. Use of this design in full or in part is strictly prohibited. All drawings and design concepts remain property of ad vice studios, LLC.

Customer Approval:

Date:

Client:

LINCOLN PROPERTY COMPANY

Project:

LINCOLN AT DISCOVERY SQUARE

Location:

HERNDON, VIRGINIA

Drawing #: X5.01-SHT 01

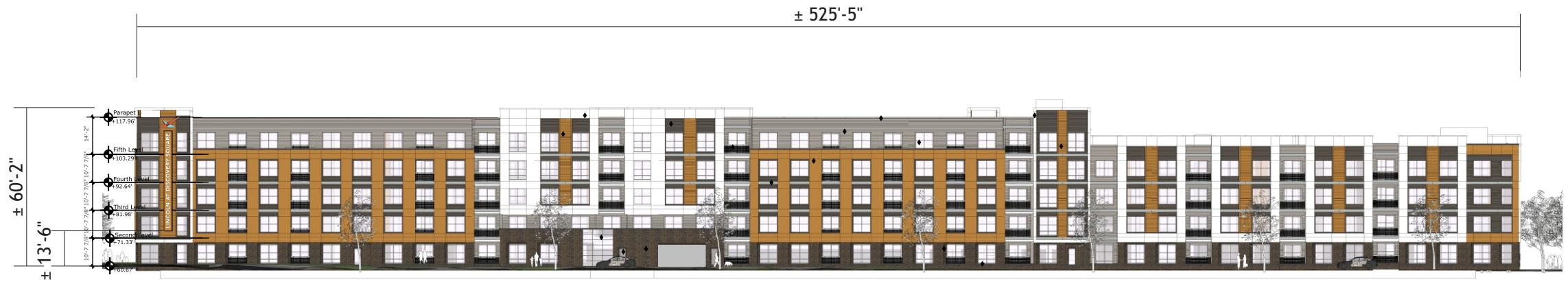
Scale: 1/8" = 1'-0"

Date: MARCH 27, 2015

Revision #	Revision Date:
3	MAY 19, 2015
4	MAY 20, 2015
5	JUNE 30, 2015
6	AUGUST 4, 2015
7	SEPTEMBER 2, 2015
8	OCTOBER 8, 2015

THIS PRINTED COLOR RENDERING IS INTENDED TO BETTER APPROXIMATE COLOR HUES AND DISTRIBUTION. BEST EFFORTS HAVE BEEN MADE TO SIMULATE THE ACTUAL COLOR(S). HOWEVER, EXACT COLOR(S) CAN ONLY BE SEEN FROM THE SPECIFIED COLOR SYSTEM'S CHIP OR SAMPLE.

All permits (including electrical permits, if required) and final electrical connection(s) for this/these sign(s) are by others



**NEIL ARMSTRONG AVENUE ELEVATION**

ad vice studios, LLC  
 6400 mechanicsville turnpike, suite 200  
 mechanicsville, va 23111  
 phone:(804) 730-0503 fax:(804) 746-5210  
 www.advicestudios.com  
 Copyright ad vice studios, LLC 2015



This sign must be U.L. Listed and approved with external disconnect switch to match NEC.  
 ELECTRICAL REQUIREMENTS UNLESS OTHERWISE SPECIFIED: 120 VOLT FOR MAXIMUM OF 20-AMP CIRCUIT(S).

All permits (including electrical permits, if required) and final electrical connection(s) for this/these sign(s) are by others			
Customer	LINCOLN PROPERTY COMPANY	Drawing #	X5.01
Project	LINCOLN AT DISCOVERY SQUARE	Date	October 8, 2015
Address	HERNDON, VIRGINIA	Scale	1" = 50'-0"
		Sheet #	02
		Revision #	
		Revision Date	

THIS PRINTED COLOR RENDERING IS INTENDED TO BETTER APPROXIMATE COLOR HUES AND DISTRIBUTION. BEST EFFORTS HAVE BEEN MADE TO SIMULATE THE ACTUAL COLOR(S).HOWEVER, EXACT COLOR(S) CAN ONLY BE SEEN FROM THE SPECIFIED COLOR SYSTEM'S CHIP OR SAMPLE  
 This drawing is the sole property of ad vice studios, LLC. Reproduction of these drawings is strictly prohibited without the written consent of ad vice studios, LLC. Use of this design in full or in part is strictly prohibited. All drawings and design concepts remain property of ad vice studios, LLC.