

DONO



February 13, 2009

Sandi M. Smith  
Department of Planning and Zoning  
Planning Division  
12055 Government Center Parkway, Suite 730  
Fairfax, VA 22035

RE: Cricket Communications 2232 Application/IAD-534-D

Dear Sandi,

With respect to the above 2232 application, enclosed you will find the following:

- 1-11"x17" A&E drawings
- 2-8 ½"x11" A&E drawings
- 1-24"x36" site plan
- 1-24"x36" partial site plans
- 1-24"x36" enlarged compound plan and light pole elevation
- 3-2232 copies
- 3-copy of tax map, tax record & GIS map
- 15-photo sims (5x3)

Cricket @ 6001 Union Mill Road/IAD-534-D.

Springfield District

Please call me with any questions.

Sincerely,

A handwritten signature in black ink, appearing to read 'AB'.

Alex Beiro

Site Acquisition Specialist  
DONOHUE & BLUE, PLC  
801 N. Fairfax Street, Suite 209  
Alexandria, VA 22314  
Cell-703-623-2025  
Fax-703-549-5385

Attachments

2232 REVIEW APPLICATION

10/2005

**COUNTY OF FAIRFAX, VIRGINIA**  
**APPLICATION FOR DETERMINATION**  
**PURSUANT TO**  
**SECTION 15.2-2232 OF THE CODE OF VIRGINIA**

**Application Number:** \_\_\_\_\_  
 (assigned by staff)

*The application contains three parts: I. Application Summary; II. Statement of Justification; and III. Telecommunication Proposal Details. Please do not staple, bind or hole-punch this application. Please provide at least one copy of all pages, including maps and drawings, on 8.5 x 11 inch paper.*

*(Please Type or Print All Requested Information)*

**PART I: APPLICATION SUMMARY**

**ADDRESS OF PROPOSED USE**

Street Address 6001 Union Mill Road (Centreville High School)

City/Town Clifton Zip Code 20124

**APPLICANT(S)**

Name of Applicant Cricket Communications, Inc.

Street Address 7100 Columbia Gateway Drive, Suite 120

City/Town Columbia State MD Zip Code 21045

Telephone Number: Work ( ) IAD-534-D Fax ( ) \_\_\_\_\_

E-mail Address ed.donohue@donohueblue.com

Name of Applicant's Agent/Contact (if applicable) Edward Donohue

Agent's Street Address 801 N. Fairfax Street, Suite 209

City/Town Alexandria State VA Zip Code 22314

Telephone: Work (703) 549-1123, ext. 102 Fax ( ) 703-549-5385

2232 REVIEW APPLICATION  
10/2005

**PROPOSED USE**

Street Address 6001 Union Mill Road (Centreville High School)

Fairfax Co. Tax Map and Parcel Number(s) 66-1 ((1)) 12A, 12B

Brief Description of Proposed Use \_\_\_\_\_

Telecommunications facility-Applicant proposes to attach up to 6 antennas (3 new, 3 future) on a new light pole and remove the existing light pole. In addition, applicant will install up to 2 equipment cabinets in a new equipment compound.

Total Area of Subject Parcel(s) 25.9211 acres \_\_\_\_\_ (acres or square feet)

Portion of Site Occupied by Proposed Use 150 square feet \_\_\_\_\_ (acres or square feet)

Fairfax County Supervisor District Springfield

Planned Use of Subject Property (according to Fairfax County Comprehensive Plan)  
Public schools.

Zoning of Subject Property R-1 (Residential 1 DU/AC)

List all applicable Proffer Conditions, Development Plans, Special Exceptions, Special Permits or Variances previously approved and related to this site

- FSA-S97-40-1. Approved 5/2/2002.
- FS-S04-65. Approved 11/17/2004.
- FSA-S97-40-2. Approved 3/31/2005.

**PROPERTY OWNER(S) OF RECORD**

Owner School Board of Fairfax County

Street Address 8115 Gatehouse Road

City/Town Falls Church State VA Zip Code 22042

**PART II**, entitled "Statement of Justification," pages 4 through 6, shall be completed by all applicants and included as part of the application. **PART III**, entitled "Telecommunication Proposal Details," pages 7 through 9, also shall be completed and included for all proposed telecommunication uses.

Name of Applicant or Agent Ed Donohue

Signature of Applicant or Agent \_\_\_\_\_

Date February 13, 2009

\*\*\*\*\*

*Please do not staple, bind or hole-punch this application. Please provide at least one copy of all pages, including maps and drawings, on 8.5 x 11 inch paper.*

**Submit completed application to:**

**Fairfax County  
Department of Planning and Zoning, Planning Division  
Herrity Building  
12055 Government Center Parkway, Suite 730  
Fairfax, Virginia 22035**

\*\*\*\*\*

|  |
|--|
| <p><b>FOR STAFF USE ONLY</b></p> <p>Date application received: ___/___/___</p> <p>By: _____</p> <p>Additional information requested to complete application:</p> <p>_____</p> <p>_____</p> <p>_____</p> <p>Date application accepted: ___/___/___</p> <p>By: _____</p> |
|--|

2232 REVIEW APPLICATION  
10/2005**PART III: TELECOMMUNICATION PROPOSAL DETAILS**

*Please complete and provide all requested information. If question is not applicable to the proposed use, please indicate with N/A.*

**PROPOSED TELECOMMUNICATION USE**

Use is (check one):

- New structure (monopole, tower or camouflaged facility)
- Replacement of existing pole or tower at same location with another pole or tower
- Antenna placement on building or penthouse facade
- Antenna placement on building or penthouse rooftop
- Collocation on other existing telecommunications structure (monopole or tower)
- Collocation on other non-telecommunications structure (such as an electric transmission tower/pole, utility pole, water tower, etc.)
- Modification to telecommunications facility previously approved for same applicant:  
Prior 2232 Review application number: \_\_\_\_\_  
Date of Planning Commission approval: \_\_\_\_\_

**PROJECT DETAILS****1. ANTENNA**

Number and Type: 6. (3 new, 3 future). Type=Cylinder.  
Dimensions: height 72" width \_\_\_\_\_ depth \_\_\_\_\_ diameter 6.2"  
Location / Placement: Attached to side of light pole on a low profile platform kit  
Wattage: \_\_\_\_\_  
Material and Color: Metal/gray  
Material and Color of the Antenna Mounting: Metal/gray  
Height Above Ground: 120'

**2. EQUIPMENT**

Number and Type of Cabinets or Structures: 2 cabinets  
Cabinet / Structure Dimensions: height 55" width 52" depth 30"  
Height of equipment platforms, if any: 20" maximum.  
Material and Color: Steel/gray  
Location: Base of new light pole.  
Method of Screening: New 8' high chain link fence installed by Cricket.

**3. STRUCTURE ON WHICH ANTENNAS WILL BE MOUNTED**

Maximum Height: 120'  
Material: Steel.  
Color: Gray.  
If structure is within a utility right-of-way, state right-of-way width:  
\_\_\_\_\_

Fairfax County

Page 1 of 3

**MAP #: 0661 01 0012A**  
**SCHOOL BOARD OF FAIRFAX**  
**COUNTY**

6001 UNION MILL RD

**Owner**

Name SCHOOL BOARD OF FAIRFAX COUNTY,  
Mailing Address 8115 GATEHOUSE RD FALLS CHURCH VA 22042  
Book 05644  
Page 0823

**Parcel**

Property Location 6001 UNION MILL RD  
Map # 0661 01 0012A  
Tax District 80000  
District Name SPRINGFIELD  
Land Use Code Public Schools  
Land Area (acreage) 25.9211  
Land Area (SQFT)  
Zoning Description R-1(Residential 1 DU/AC)  
Utilities WATER CONNECTED  
SEWER CONNECTED  
GAS CONNECTED  
County Historic Overlay District NO  
For further information about Historic Overlay  
Districts, [Click here](#)  
Street/Road PAVED  
Site Description BUILDABLE-AVERAGE LOT

**Legal Description**

Legal Description JOHNNY MOORE LAND

**Sales History**

| Date       | Amount | Seller | Buyer           |
|------------|--------|--------|-----------------|
| 04/15/1982 | \$0    |        | SCHOOL BOARD OF |

**Sales**

Date 04/15/1982  
Amount \$0  
Seller  
Buyer SCHOOL BOARD OF  
Notes Valid and verified sale  
Deed Book and Page 05644-0823

**Values**

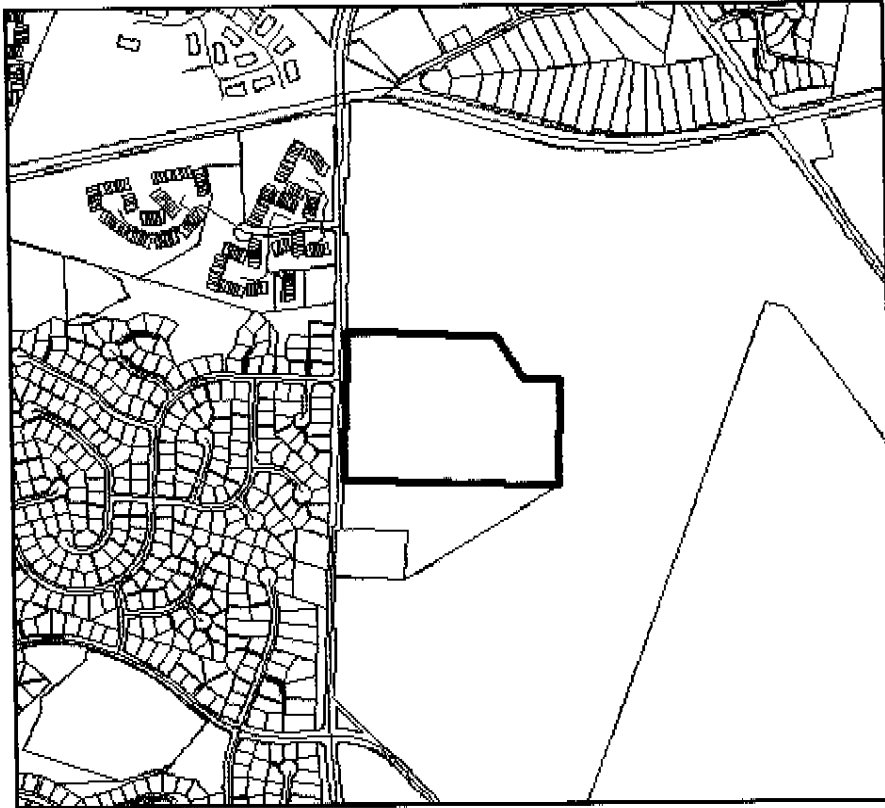
Current Land \$1,243,000  
Current Building \$20,000,000  
Current Assessed Total \$21,243,000  
Tax Exempt YES  
Note

**Values History**

| Tax Year | Land        | Building     | Assessed Total | Tax Exempt |
|----------|-------------|--------------|----------------|------------|
| 2008     | \$1,243,000 | \$20,000,000 | \$21,243,000   | YES        |
| 2007     | \$1,243,000 | \$20,000,000 | \$21,243,000   | YES        |
| 2006     | \$1,243,000 | \$20,000,000 | \$21,243,000   | YES        |
| 2005     | \$1,243,000 | \$20,000,000 | \$21,243,000   | YES        |

MAP #: 0661 01 0012A  
SCHOOL BOARD OF FAIRFAX COUNTY

6001 UNION MILL RD

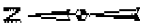


Aerial Imagery © 2002 Commonwealth of Virginia  
Fairfax © 2003

Source: Fairfax County Department  
of Tax Administration, Real Estate Division.



Official City of Springfield, Illinois  
 Planning & Zoning Department



**GENERAL NOTES:**

1. This map was prepared by the Planning & Zoning Department on 02/14/2009.
2. All zoning districts shown on this map are shown as proposed.
3. The zoning districts shown on this map are shown as proposed.
4. The zoning districts shown on this map are shown as proposed.

**GENERAL NOTES:**

1. This map was prepared by the Planning & Zoning Department on 02/14/2009.

2. All zoning districts shown on this map are shown as proposed.

3. The zoning districts shown on this map are shown as proposed.

4. The zoning districts shown on this map are shown as proposed.

5. The zoning districts shown on this map are shown as proposed.

6. The zoning districts shown on this map are shown as proposed.

7. The zoning districts shown on this map are shown as proposed.

8. The zoning districts shown on this map are shown as proposed.

9. The zoning districts shown on this map are shown as proposed.

10. The zoning districts shown on this map are shown as proposed.

11. The zoning districts shown on this map are shown as proposed.

12. The zoning districts shown on this map are shown as proposed.

13. The zoning districts shown on this map are shown as proposed.

14. The zoning districts shown on this map are shown as proposed.

15. The zoning districts shown on this map are shown as proposed.

16. The zoning districts shown on this map are shown as proposed.

17. The zoning districts shown on this map are shown as proposed.

18. The zoning districts shown on this map are shown as proposed.

19. The zoning districts shown on this map are shown as proposed.

20. The zoning districts shown on this map are shown as proposed.

21. The zoning districts shown on this map are shown as proposed.

22. The zoning districts shown on this map are shown as proposed.

23. The zoning districts shown on this map are shown as proposed.

24. The zoning districts shown on this map are shown as proposed.

25. The zoning districts shown on this map are shown as proposed.

26. The zoning districts shown on this map are shown as proposed.

27. The zoning districts shown on this map are shown as proposed.

28. The zoning districts shown on this map are shown as proposed.

29. The zoning districts shown on this map are shown as proposed.

30. The zoning districts shown on this map are shown as proposed.

31. The zoning districts shown on this map are shown as proposed.

32. The zoning districts shown on this map are shown as proposed.

33. The zoning districts shown on this map are shown as proposed.

34. The zoning districts shown on this map are shown as proposed.

35. The zoning districts shown on this map are shown as proposed.

36. The zoning districts shown on this map are shown as proposed.

37. The zoning districts shown on this map are shown as proposed.

38. The zoning districts shown on this map are shown as proposed.

39. The zoning districts shown on this map are shown as proposed.

40. The zoning districts shown on this map are shown as proposed.

41. The zoning districts shown on this map are shown as proposed.

42. The zoning districts shown on this map are shown as proposed.

43. The zoning districts shown on this map are shown as proposed.

44. The zoning districts shown on this map are shown as proposed.

45. The zoning districts shown on this map are shown as proposed.

46. The zoning districts shown on this map are shown as proposed.

47. The zoning districts shown on this map are shown as proposed.

48. The zoning districts shown on this map are shown as proposed.

49. The zoning districts shown on this map are shown as proposed.

50. The zoning districts shown on this map are shown as proposed.

51. The zoning districts shown on this map are shown as proposed.

52. The zoning districts shown on this map are shown as proposed.

53. The zoning districts shown on this map are shown as proposed.

54. The zoning districts shown on this map are shown as proposed.

55. The zoning districts shown on this map are shown as proposed.

56. The zoning districts shown on this map are shown as proposed.

57. The zoning districts shown on this map are shown as proposed.

58. The zoning districts shown on this map are shown as proposed.

59. The zoning districts shown on this map are shown as proposed.

60. The zoning districts shown on this map are shown as proposed.

61. The zoning districts shown on this map are shown as proposed.

62. The zoning districts shown on this map are shown as proposed.

63. The zoning districts shown on this map are shown as proposed.

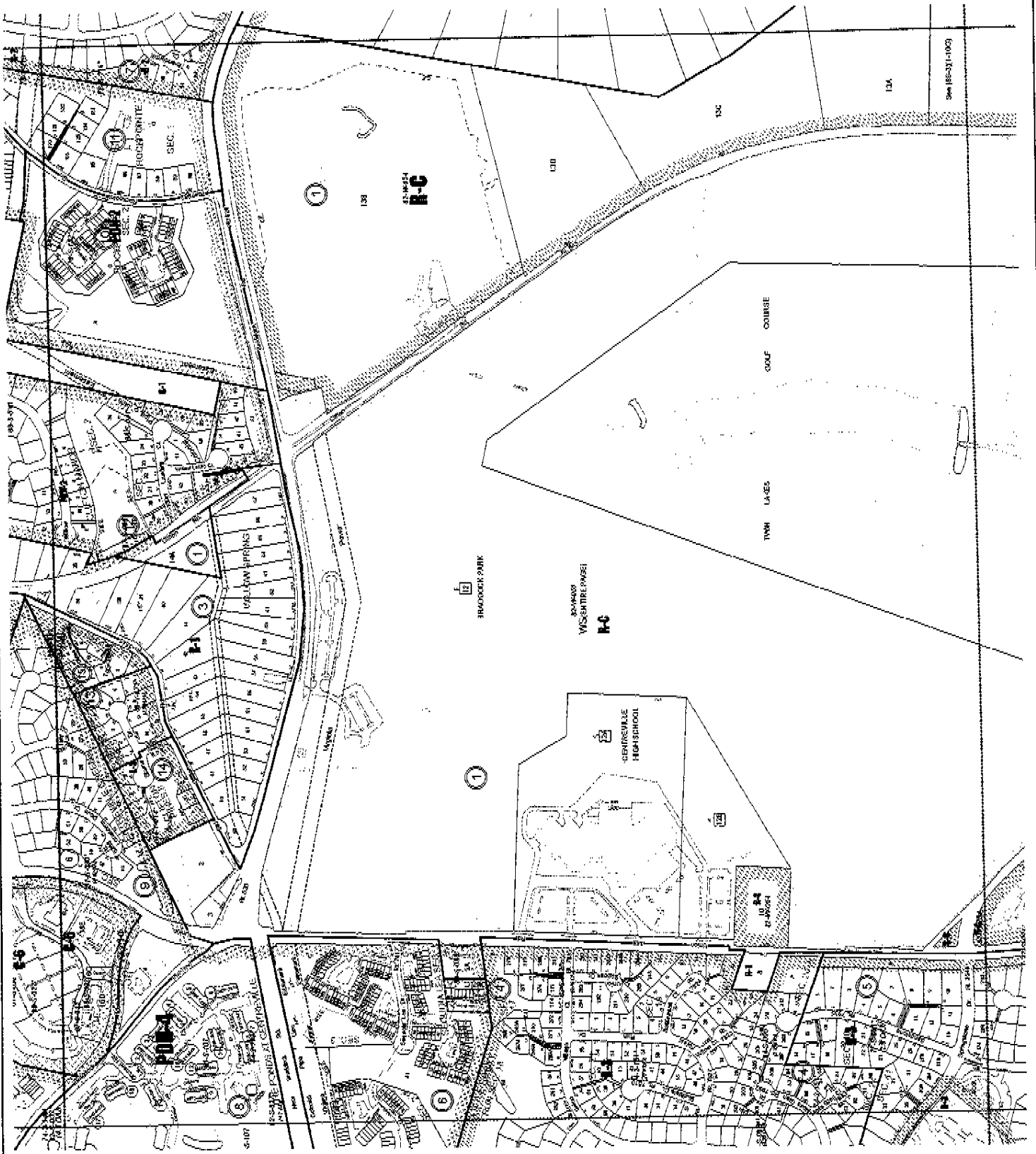
64. The zoning districts shown on this map are shown as proposed.

65. The zoning districts shown on this map are shown as proposed.

66. The zoning districts shown on this map are shown as proposed.

67. The zoning districts shown on this map are shown as proposed.

68. The zoning districts shown on this map are shown as proposed.



**SUBSTITUTION INDEX:**

|      |       |       |
|------|-------|-------|
| 54-4 | 55-4  | 55-4  |
| 85-2 | 86-2  | 166-2 |
| 85-4 | 166-3 | 166-4 |

**PROPERTY MAP ZONING**  
**66-1**  
 Revised & III - 01 - 2007

© 2007 CITY OF SPRINGFIELD, ILLINOIS  
 ALL RIGHTS RESERVED  
 THE CITY OF SPRINGFIELD, ILLINOIS  
 PLANNING & ZONING DEPARTMENT  
 100 SOUTH SPRINGFIELD AVENUE, SUITE 100  
 SPRINGFIELD, ILLINOIS 62761  
 (618) 681-1330  
 WWW.CITYOFSPRINGFIELD.IL.GOV