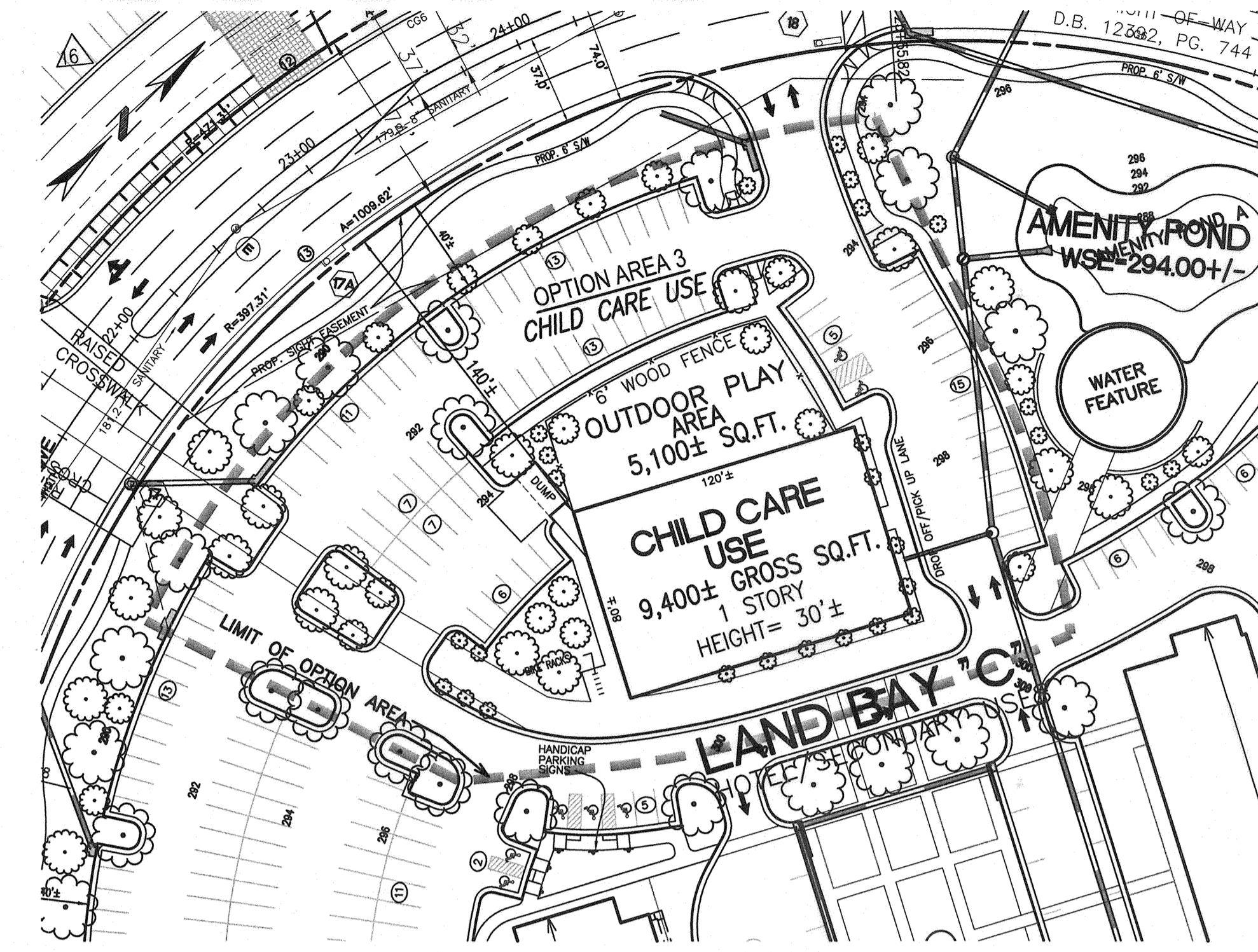
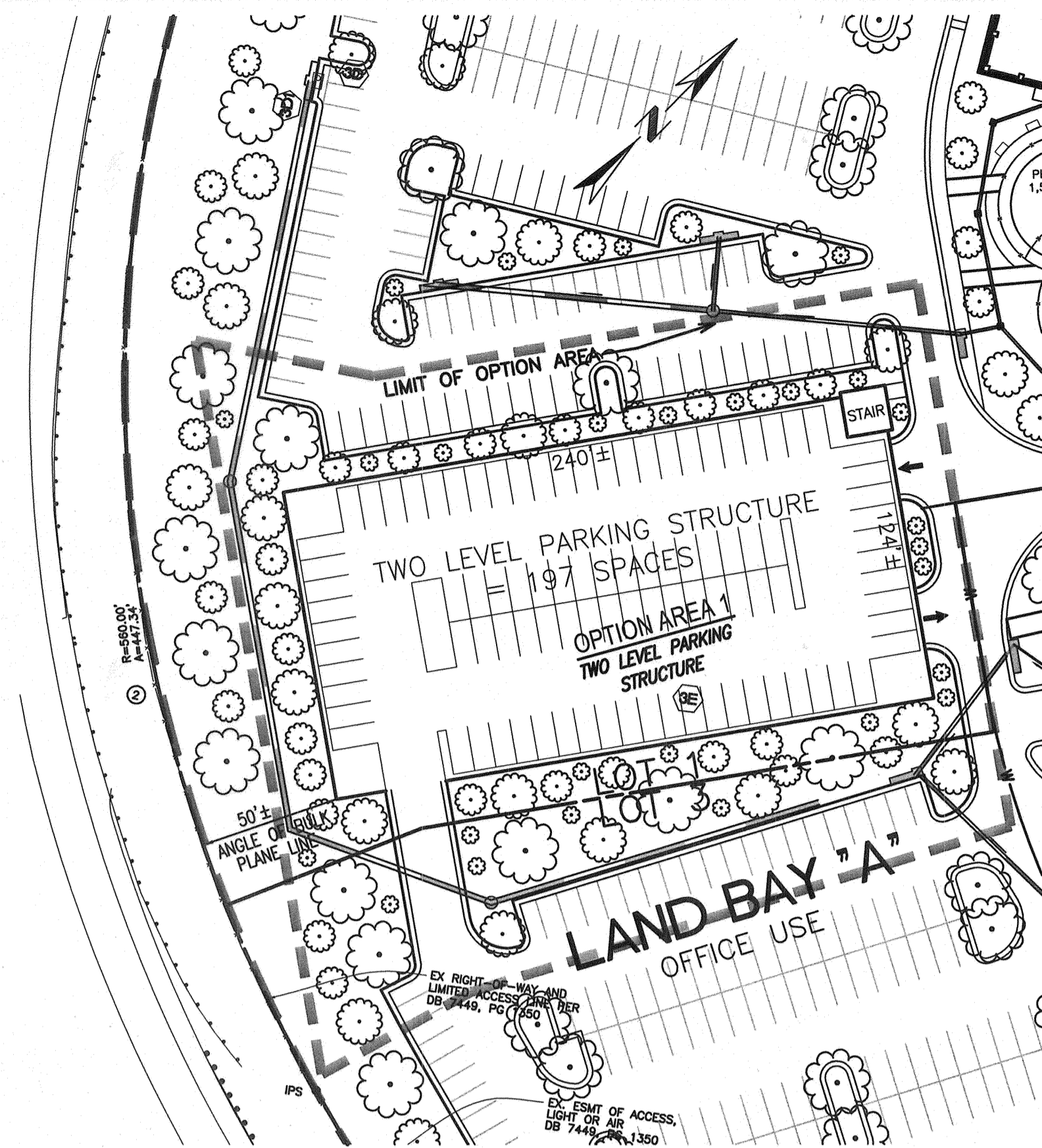
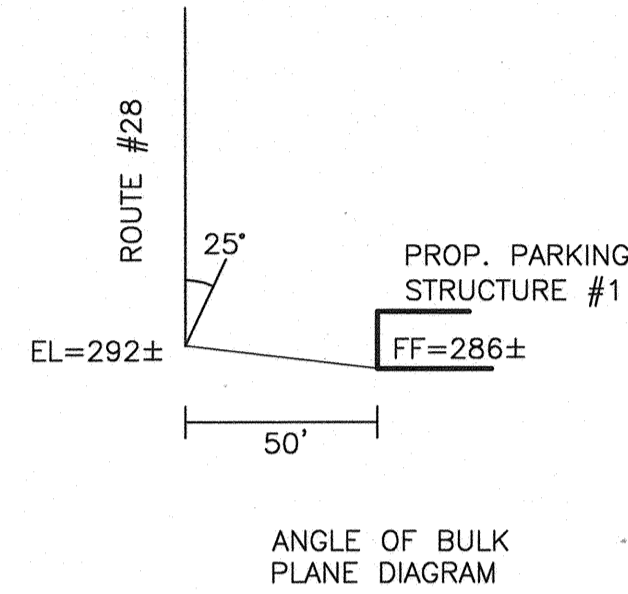


**CDP, FDP AND PCA ALTERNATE
OPTION 1 - LAND BAY A, PARCEL 6D
TWO-LEVEL PARKING STRUCTURE
IN LIEU OF SURFACE PARKING**

	WITHOUT PARKING STRUCTURE	WITH PARKING STRUCTURE
OPTION AREA:	2.59 AC.	2.59 AC.
PARKING SPACES:	158 SPACES	240 SPACES
OPEN SPACE:	20,349 SF/0.47 AC.	21,019 SF/0.48 AC.
OPEN SPACE %:	29.6%	30.2%

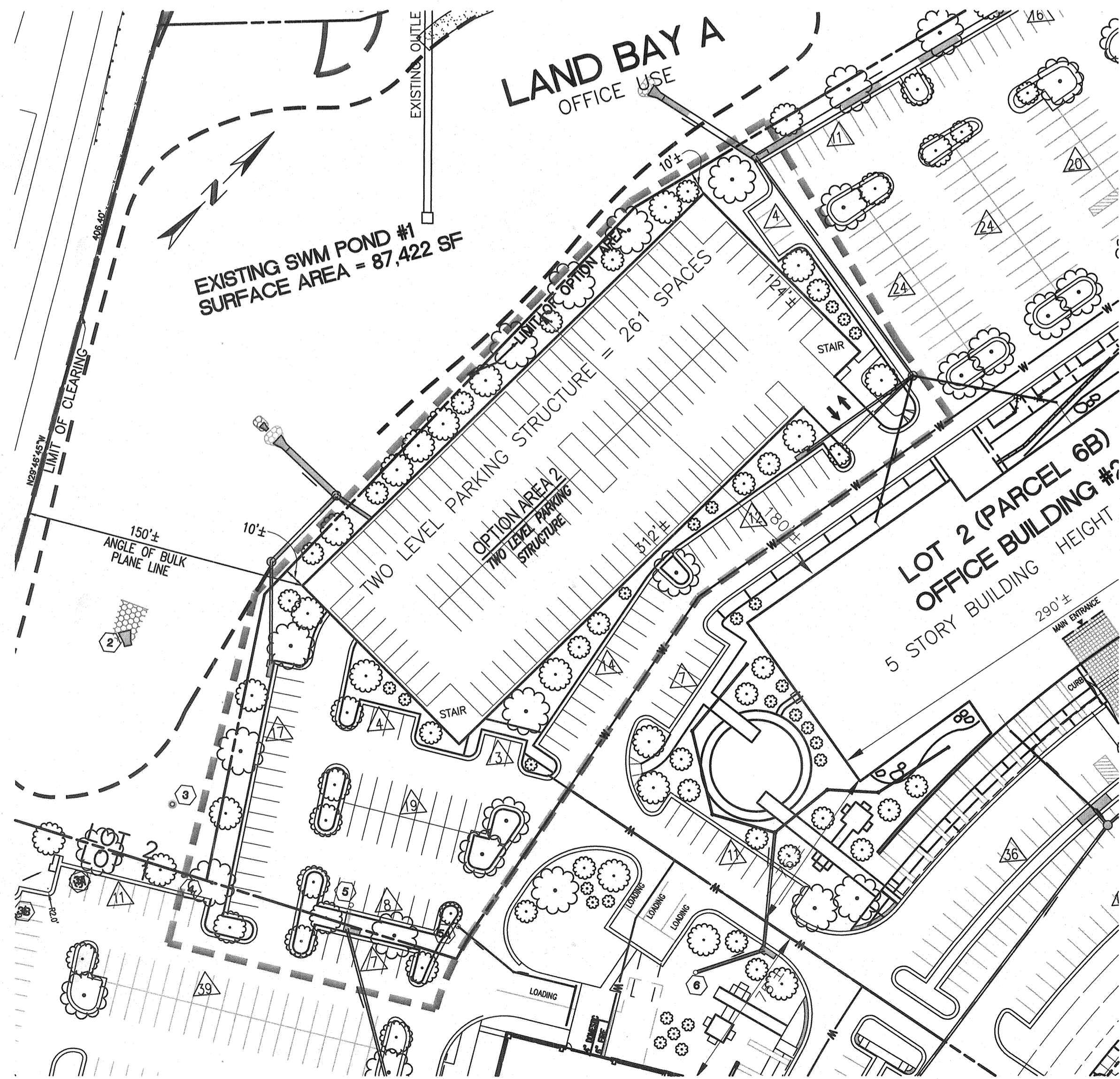
NOTE: REFER TO SHEET 4 FOR SITE LAYOUT WITH SURFACE PARKING AT THIS LOCATION.



**CDP, FDP AND PCA ALTERNATE
OPTION 3 - LAND BAY C
CHILD CARE USE
AS ALTERNATIVE SECONDARY USE**

	WITHOUT CHILD CARE USE	WITH CHILD CARE USE
OPTION AREA:	1.54 AC.	1.54 AC.
PARKING SPACES:	96 SPACES	72 SPACES
OPEN SPACE:	17,353 SF/0.40 AC.	23,122 SF/0.53 AC.
OPEN SPACE %:	26.0%	34.0%

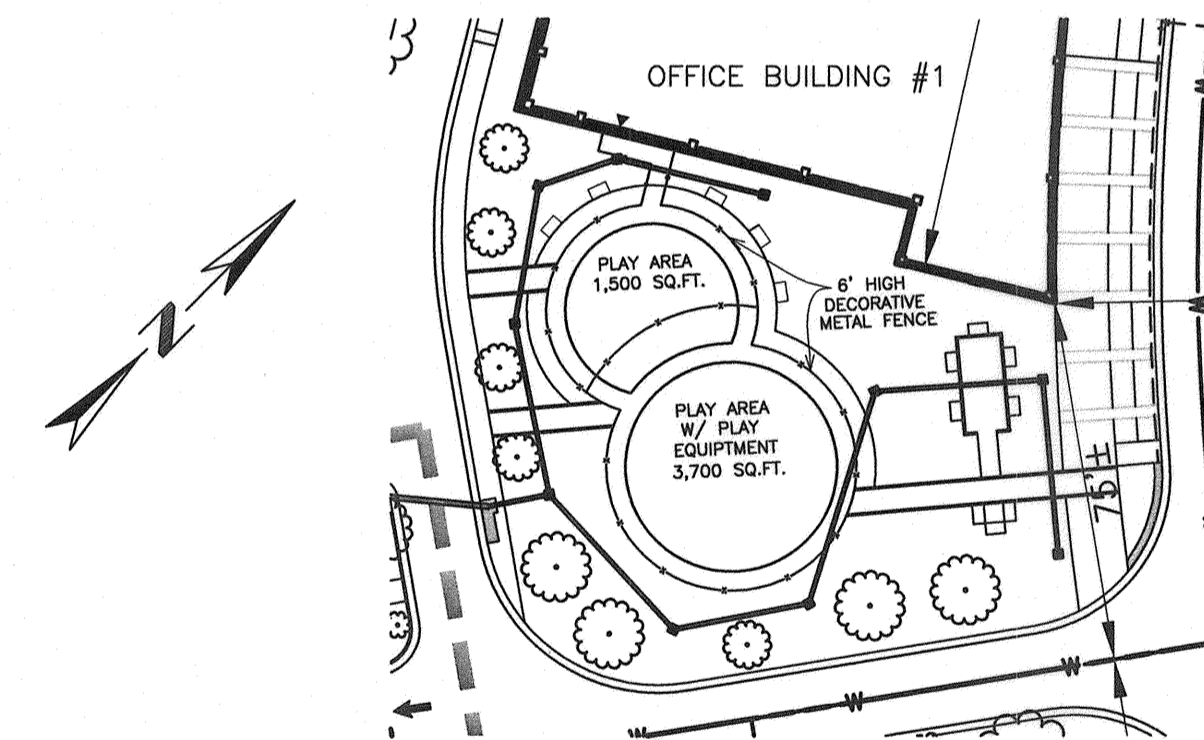
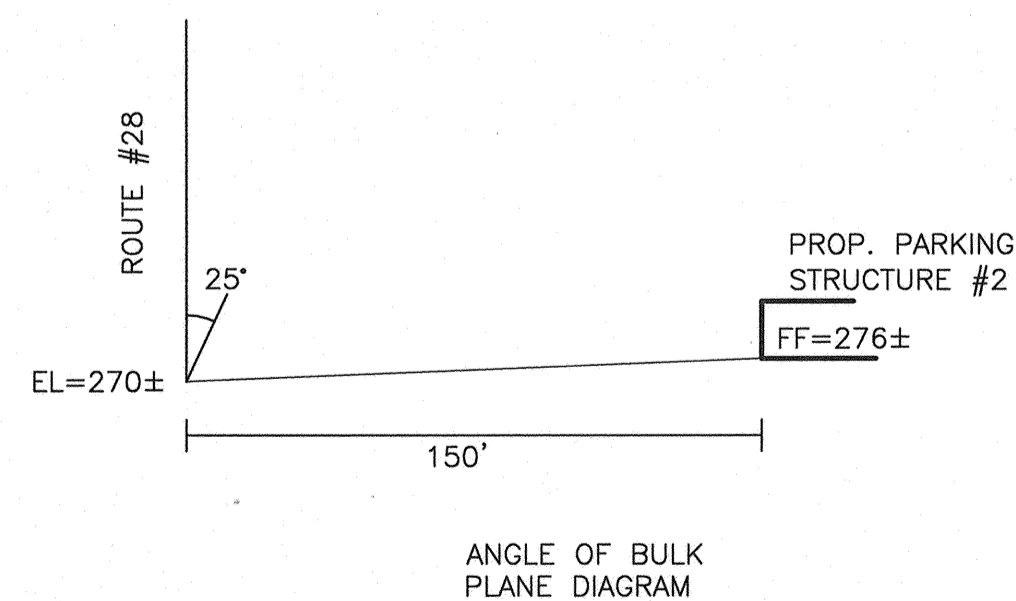
NOTE: REFER TO SHEET 4 FOR SITE LAYOUT AND BUILDING CONFIGURATION IF THE BUILDING AT THIS LOCATION IS INTENDED FOR A SECONDARY USE OTHER THAN CHILD CARE.



**CDP, FDP AND PCA ALTERNATE
OPTION 2 - LAND BAY A, PARCEL 6B
TWO-LEVEL PARKING STRUCTURE
IN LIEU OF SURFACE PARKING**

	WITHOUT PARKING STRUCTURE	WITH PARKING STRUCTURE
OPTION AREA:	2.19 AC.	2.19 AC.
PARKING SPACES:	217 SPACES	369 SPACES
OPEN SPACE:	20,475 SF/0.47 AC.	21,423 SF/0.49 AC.
OPEN SPACE %:	21.5%	22.4%

NOTE: REFER TO SHEET 4 FOR SITE LAYOUT WITH SURFACE PARKING AT THIS LOCATION.



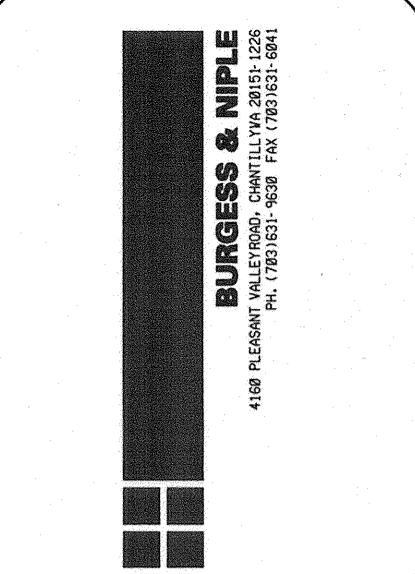
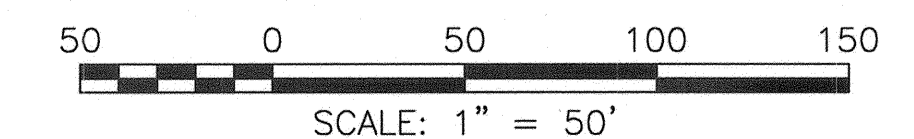
**CDP, FDP AND PCA ALTERNATE
OPTION 4 - LAND BAY A, PARCEL 6D
ALTERNATE CHILD CARE USE
AS AN ACCESSORY USE
IN A PORTION OF OFFICE BUILDING #1,
WITH AN OUTDOOR PLAY AREA**

CHILD CARE USE AREA WITHIN BUILDING: 6100 SQ.FT.
NUMBER OF CHILDREN: 70

NOTE: CHILD CARE SERVICES TO BE PROVIDED EXCLUSIVELY FOR BUILDING TENANTS.

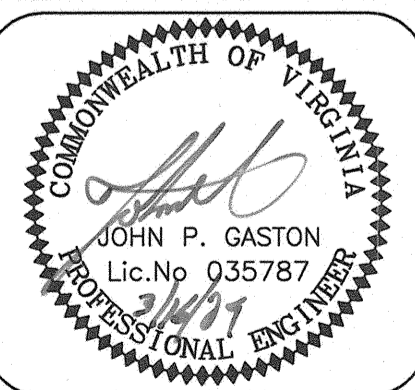
NOTES:

1. THE "OPTION AREA" IS AN ARBITRARY LIMIT ESTABLISHED SOLELY FOR COMPARATIVE PURPOSES.
2. THE CONFIGURATION OF THE PARKING STRUCTURES AND THE NUMBER OF SPACES MAY VARY SLIGHTLY WITH FINAL DESIGN.



REVISIONS	DATE
ADD OPTION AREA #4	3/12/09
COUNTY COMMENTS (PCA)	3/12/09
REVISE LANDSCAPING	11/12/08

CONCEPTUAL DEVELOPMENT PLAN AMENDMENT,
FINAL DEVELOPMENT PLAN AMENDMENT AND
PROFFER CONDITION AMENDMENT PLAN
SITE LAYOUT OPTIONS 1-3
COMMONWEALTH CENTRE
AT WESTFIELDS
SULLY DISTRICT
FAIRFAX COUNTY, VIRGINIA



DATE: AUGUST, 2008
SCALE: 1" = 50'
DESIGN: JLM DRAWN: MPC
CHECK: JPC CHECK: JLM
JOB NO.: 93c091
P.R. NO.: 44774
SHEET 4A OF 20
FILE NO.: C-4710