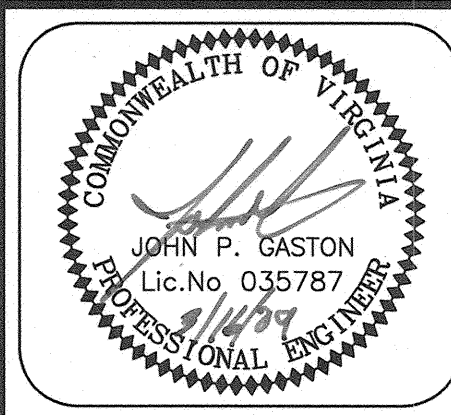


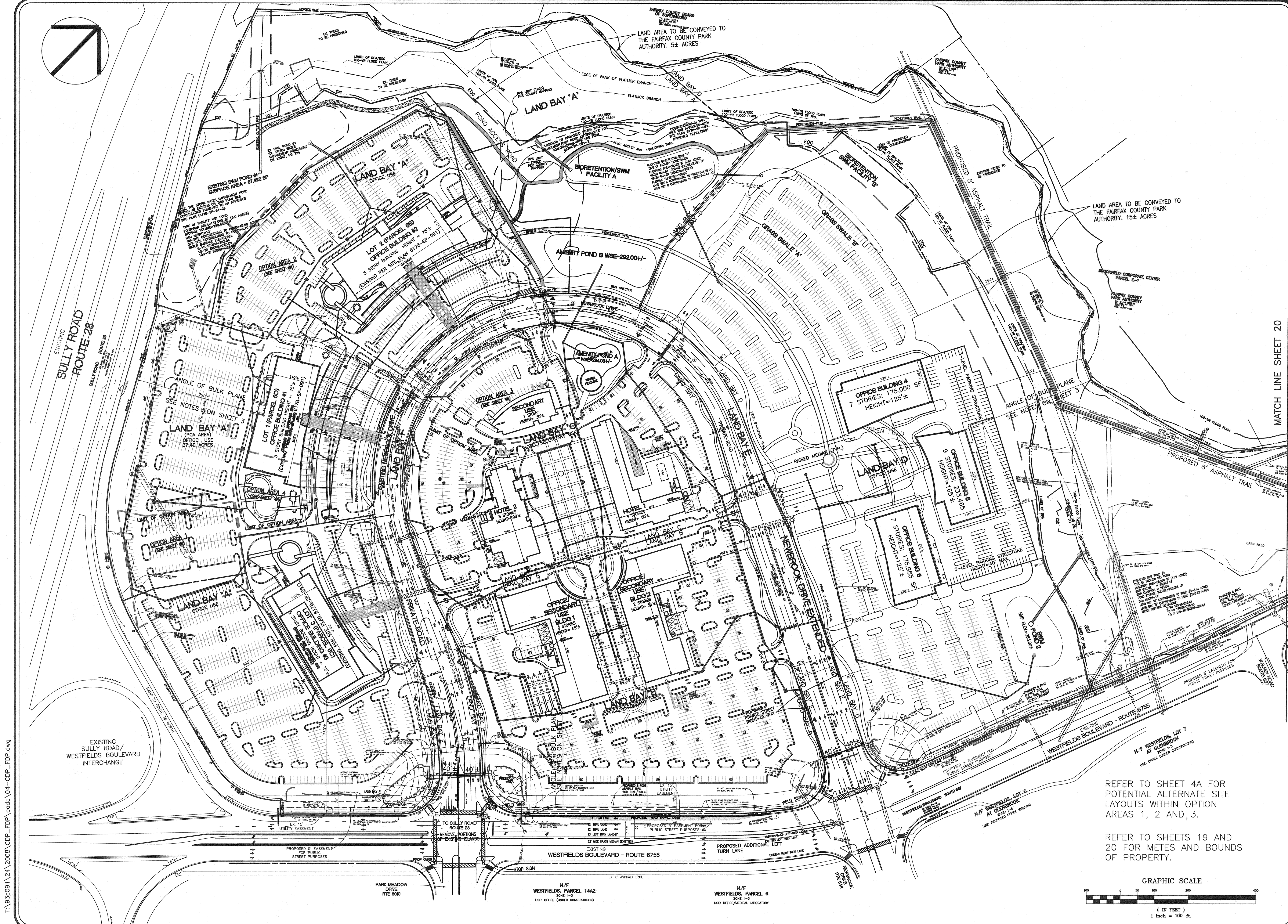
BURGESS & NIPLE
 ARCHITECTS
 4500 PLAZA DRIVE, SUITE 100
 FARMINGTON, VIRGINIA 22044
 PHONE: (703) 831-1000
 FAX: (703) 831-1001

REVISIONS	DATE
DELETE CEMETERY	3/12/09
ADDITIONAL OPEN SPACE	3/12/09
ADD OPTION AREA 4	3/12/09
REVISED PER COMMENTS	NOV. 2008

CONCEPTUAL DEVELOPMENT PLAN AMENDMENT,
 FINAL DEVELOPMENT PLAN AMENDMENT AND
 PROFFER CONDITION AMENDMENT PLAT
 COMMONWEALTH CENTRE
 AT WESTFIELDS
 SULLY DISTRICT
 FAIRFAX COUNTY, VIRGINIA



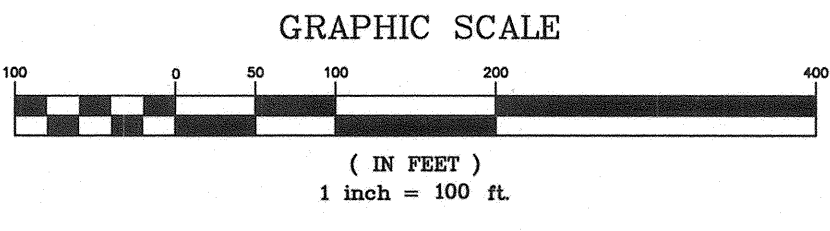
DATE: AUGUST, 2008
 SCALE: 1" = 100'
 DESIGN: JLM DRAWN: MPC
 CHECK: JPC CHECK: JLM
 JOB NO.: 93c091
 P.R. NO.: 44774
 SHEET 4 OF 20
 FILE NO.: C-4710



MATCH LINE SHEET 20

REFER TO SHEET 4A FOR
 POTENTIAL ALTERNATE SITE
 LAYOUTS WITHIN OPTION
 AREAS 1, 2 AND 3.

REFER TO SHEETS 19 AND
 20 FOR METES AND BOUNDS
 OF PROPERTY.



T:\93c091\24_2008\GDP_FDP\cadd\04-cdp_fdp.dwg